



teaching
sexual
health.ca

Grade 5

Learning Activity

Human Reproductive Systems

Learning Outcome

Students connect puberty to the capacity for human reproduction

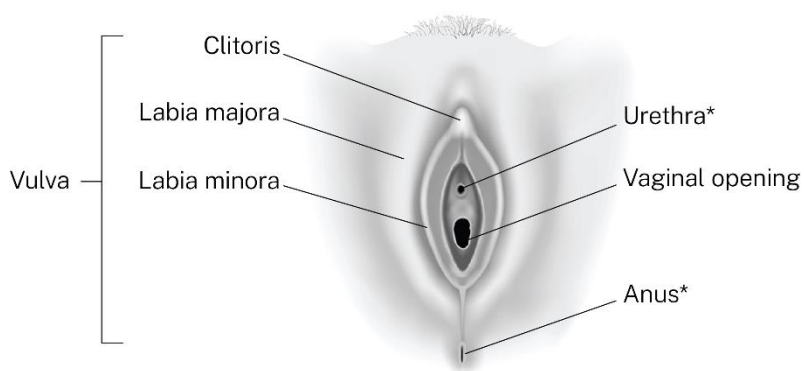
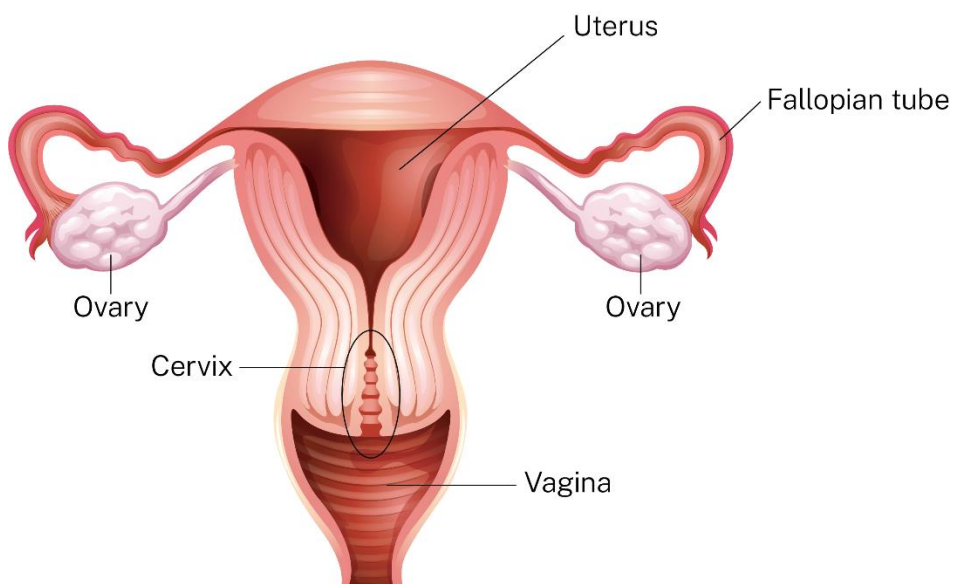
Human Reproductive Systems

Grade 5



Teaching Sexual Health

Use the diagrams to help you fill in the blanks on the next two pages.



*Not part of the reproductive system





Use the diagrams to help you fill in the blanks.

1. **Circle** the two diagrams that show the **outside** parts of the egg producing reproductive system.
2. The _____ is the sex organ that becomes larger and firmer during sexual arousal. It is a sensitive bump where the folds meet at the top front part of the vulva.
3. The outer fold of the vulva is called the _____.
4. The inner fold of the vulva is called the _____.
Both folds help protect the vagina and urethra.
5. The _____ is a tube that carries urine from the bladder out of the body. It is not part of the reproductive system.
6. The _____ leads to the vagina.
7. At the bottom of the diagram is the _____, where feces leave the body. It is not part of the reproductive system.
8. The _____ is the name for the external genitals, including the clitoris, the labia minora and majora, and the vaginal opening.
9. Put a **rectangle** around the diagram that shows only the **inside** parts of the egg producing reproductive system.





10. Put a **star** ★ next to the diagram that shows where the inside parts of the reproductive system are in the body.
11. Each side of the egg producing reproductive system has an _____, which holds the eggs.
12. The _____ on each side connects the ovary to the uterus. The egg gets to the uterus by going through this tube.
13. The _____ is about the size of a fist, but it can stretch to become much bigger. This is where the fetus develops during pregnancy.
14. The _____ is the lower, narrow part at the bottom of the uterus.
15. At the very bottom of the diagram is the _____.
This is a soft and muscular tube that leads out of the body.





Answer Key

1. **Circle** the diagram that shows the **outside** parts of the egg producing reproductive system.
2. The **clitoris** is the sex organ that becomes larger and firmer during sexual arousal. It is a sensitive bump where the folds meet at the top front part of the vulva.
3. The outer fold of the vulva is called the **labia majora**.
4. The inner fold of the vulva is called the **labia minora**. Both folds help protect the vagina and urethra.
5. The **urethra** is a tube that carries urine from the bladder out of the body. It is not part of the reproductive system.
6. The **vaginal opening** leads to the vagina.
7. At the bottom of the diagram is the **anus**, where feces leave the body. It is not part of the reproductive system.
8. The **vulva** is the name for the external genitals, including the clitoris, the labia minora and majora, and the vaginal opening.
9. Put a **rectangle** around the diagram that shows only the **inside** parts of the egg producing reproductive system.
10. Put a **star** next to the diagram that shows where the inside parts of the reproductive system are in the body.
11. Each side of the egg producing reproductive system has an **ovary**, which holds the eggs.
12. The **fallopian tube** on each side connects the ovary to the uterus. The egg gets to the uterus by going through this tube.
13. The **uterus** is about the size of a fist, but it can stretch to become much bigger. This is where the fetus develops during pregnancy.
14. The **cervix** is the lower, narrow part at the bottom of the uterus.
15. At the very bottom of the diagram is the **vagina**. This is a soft and muscular tube that leads out of the body.



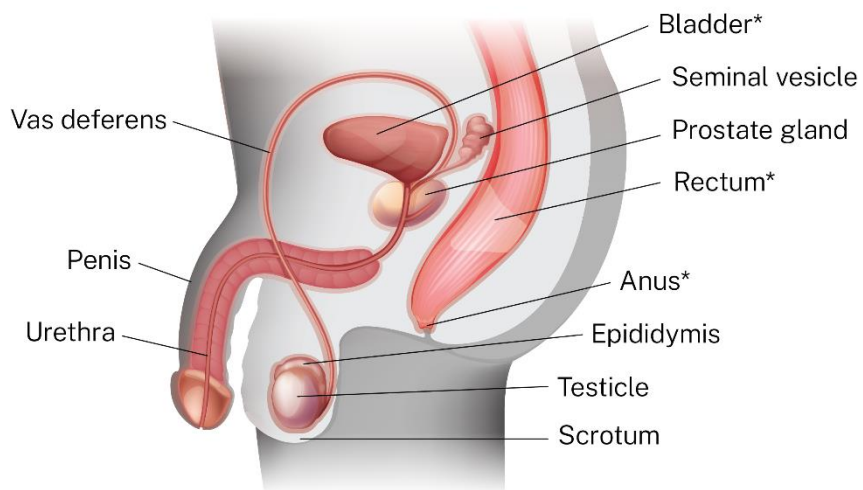
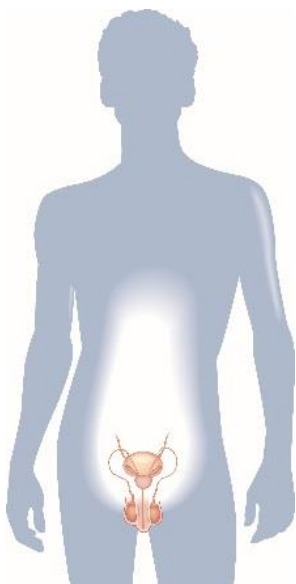
Human Reproductive Systems

Grade 5

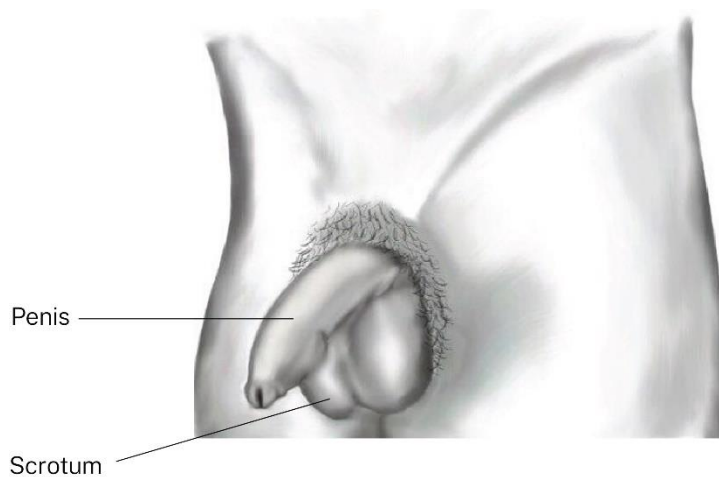


Teaching Sexual Health

Use the diagrams to help you fill in the blanks on the next two pages.







*Not part of the reproductive system





Use the diagrams on the last page to help you fill in the blanks below.

1.  the diagram that shows the **outside** parts of the sperm producing reproductive system.
2. The _____ is the sex organ that becomes larger and firmer during sexual arousal. An erection is when this part of the body becomes filled with blood.
3. The _____ is a sac that holds the testicles.
4.  the diagram that shows only the **inside** parts of the body.
5. Put a **star**  next to the diagram that shows where the inside parts of the reproductive system are in the body.
6. The _____ are in the scrotum. They make the sperm.
7. The _____ are tubes that carry the sperm from the testicles to the seminal vesicle.
8. Draw an arrow  that shows the direction the sperm move in the vas deferens.





9. The _____ are next to the bladder. They produce fluids that turn into semen. Semen is a reproductive fluid that usually carries sperm cells.
10. The _____ is just below the bladder. It also supplies fluid that combines with the sperm to make semen.
11. The tube down the length of the penis is called the _____. It is the tube for urine and semen to leave the body.





Answer Key

1. Circle the diagram that shows the **outside** parts of the sperm producing reproductive system.
2. The **penis** is the sex organ that becomes larger and firmer during sexual arousal. An erection is when this part of the body becomes filled with blood.
3. The **scrotum** is a sac that holds the testicles.
4. Put a **rectangle** around the diagram that shows only the **inside** parts of the body.
5. Put a **star** next to the diagram that shows where the inside parts of the reproductive system are in the body.
6. The **testicles** are in the scrotum. They make the sperm.
7. The **vas deferens** are tubes that carry the sperm from the testicles to the seminal vesicle.
8. Draw an arrow that shows the direction the sperm move in the vas deferens.
9. The **seminal vesicles** are next to the bladder. They produce fluids that turn into semen. Semen is a reproductive fluid that usually carries sperm cells
10. The **prostate gland** is just below the bladder. It also supplies fluid that combines with the sperm to make semen.
11. The tube down the length of the penis is called the **urethra**. It is the tube for urine and semen to leave the body.





© 2025, Primary Care Alberta, Student and Adult Health Promotion and Oral Health



This work is licensed under the Creative Commons Attribution-Non Commercial-No Derivative 4.0 International license. To view a copy of this license, see <https://creativecommons.org/licenses/by-nc-nd/4.0/>. You are free to copy and distribute the work including in other media and formats for non-commercial purposes, as long as you attribute the work to Primary Care Alberta, do not adapt the work, and abide by the other license terms. The license does not apply to Primary Care Alberta trademarks, logos or content for which Primary Care Alberta is not the copyright owner.

This material is intended for general information only and is provided on an "as is", "where is" basis. Although reasonable efforts were made to confirm the accuracy of the information, Primary Care Alberta does not make any representation or warranty, express, implied or statutory, as to the accuracy, reliability, completeness, applicability or fitness for a particular purpose of such information. This material is not a substitute for the advice of a qualified health professional. Primary Care Alberta expressly disclaims all liability for the use of these materials, and for any claims, actions, demands or suits arising from such use.

