



Primary Care
Alberta



teaching
sexual
health.ca

Grade 5 Learning Activity

Diagrams

Learning Outcome: Students connect puberty to the capacity for human reproduction.



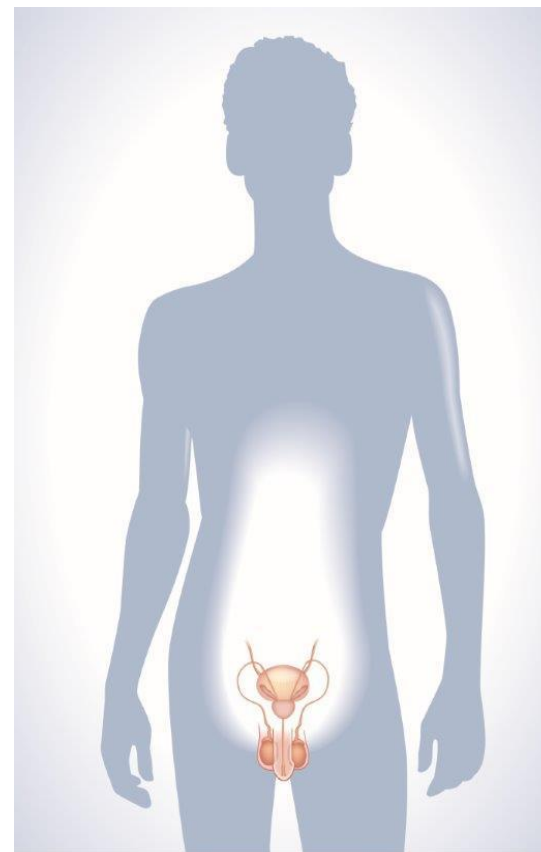
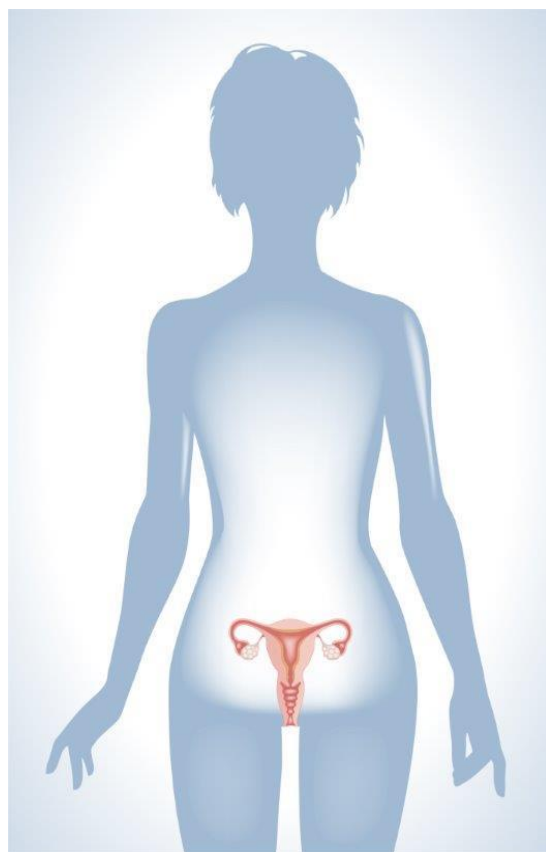
Reproductive Systems

Each part of
the human reproductive system
has a purpose.





Reproductive Systems





External Genitals



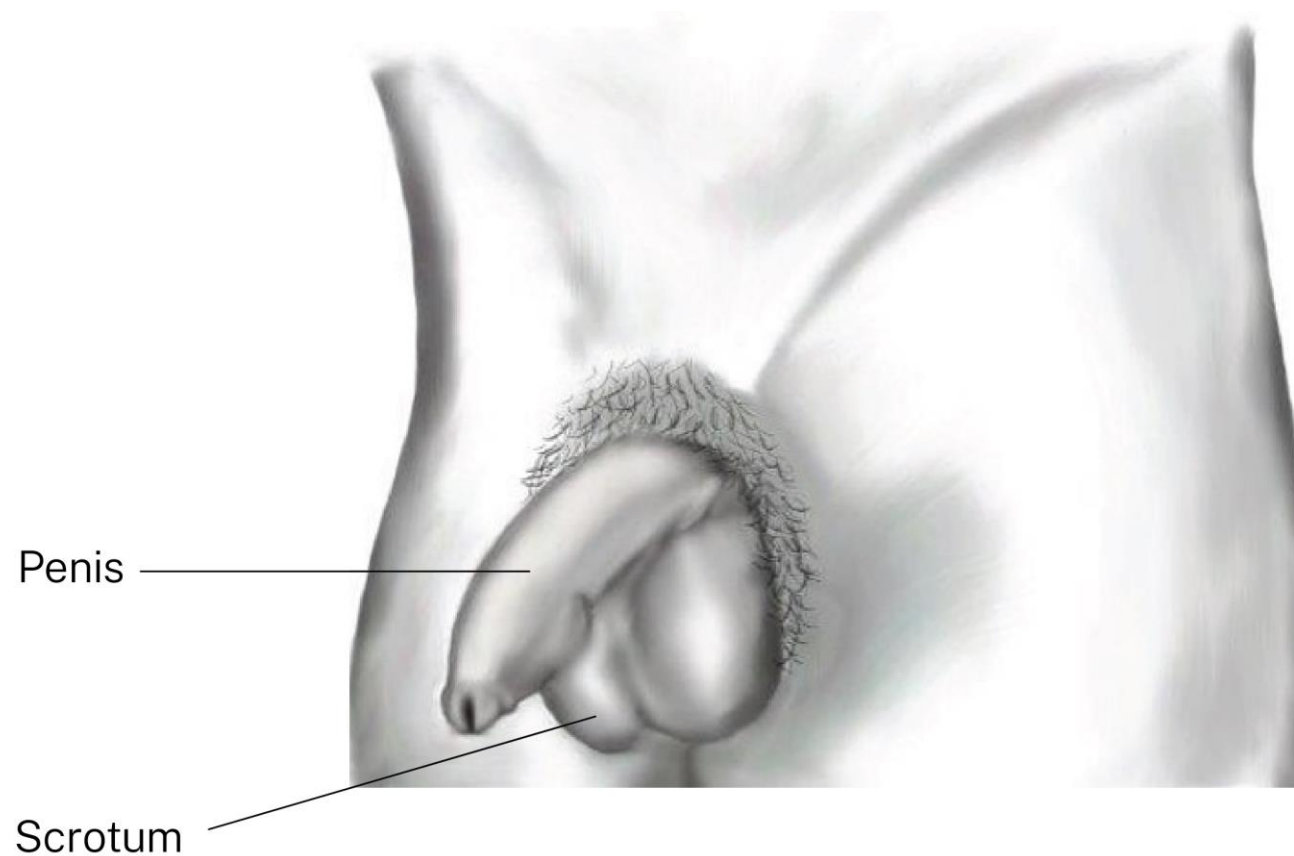


External Genitals



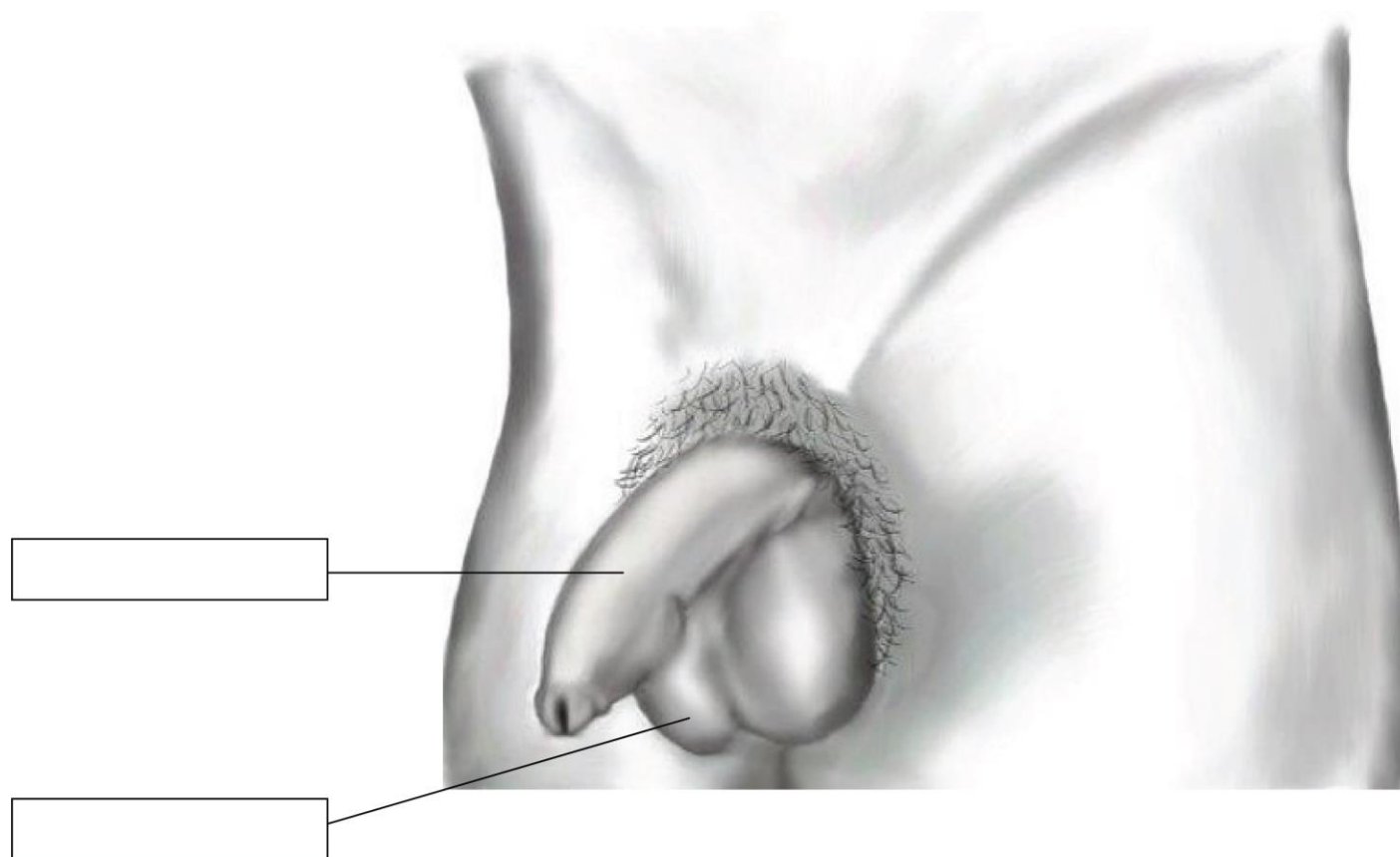


External Genitals





External Genitals



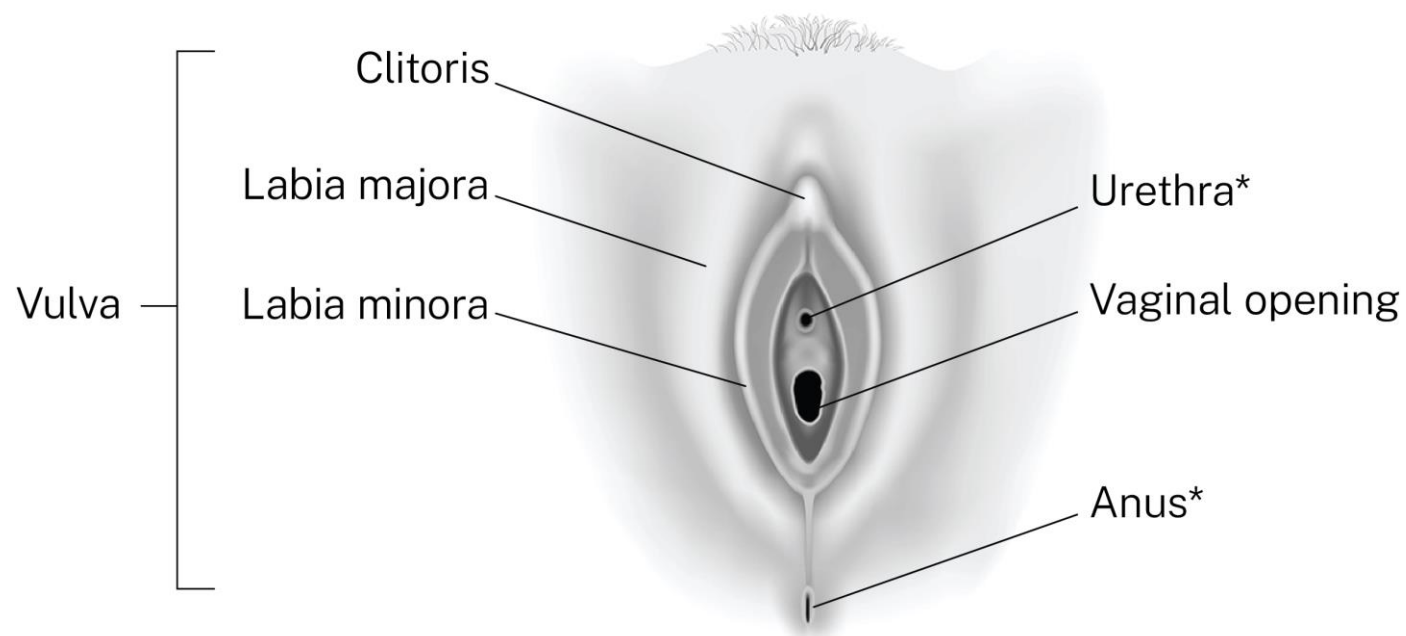


External Genitals





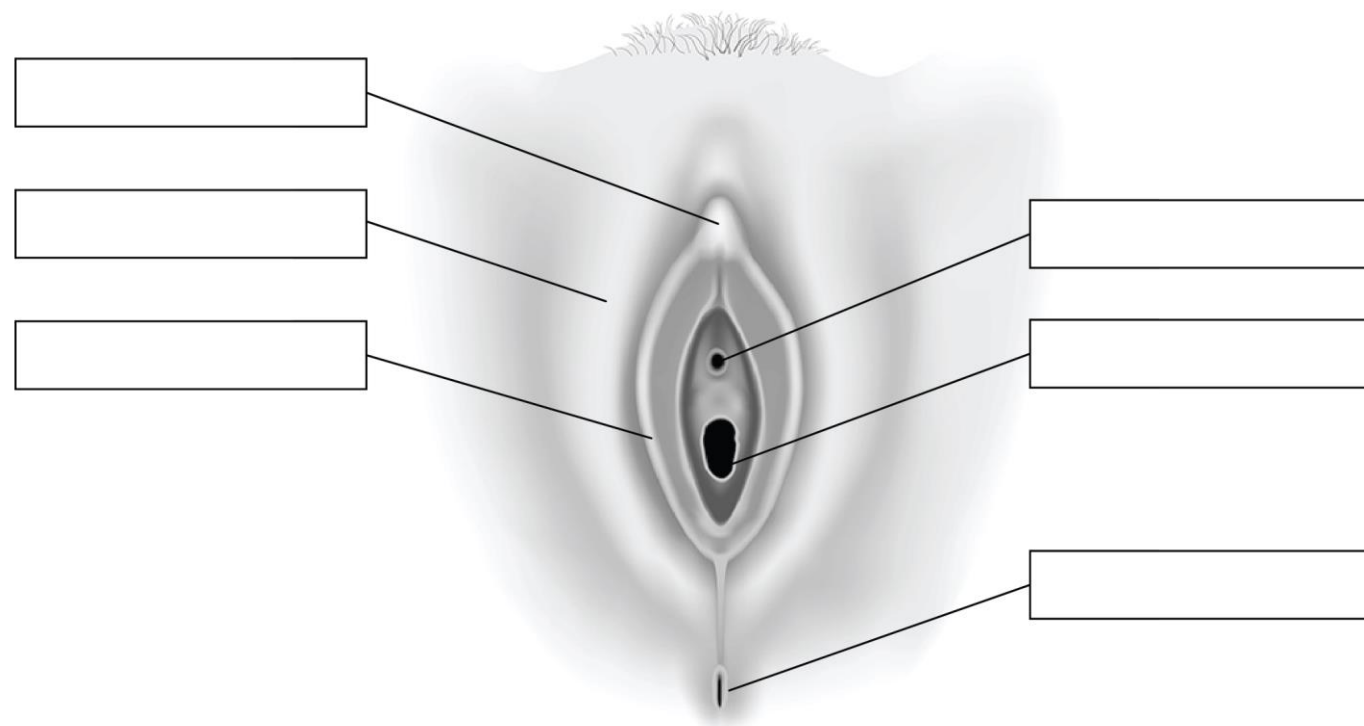
External Genitals



*Not part of the reproductive system

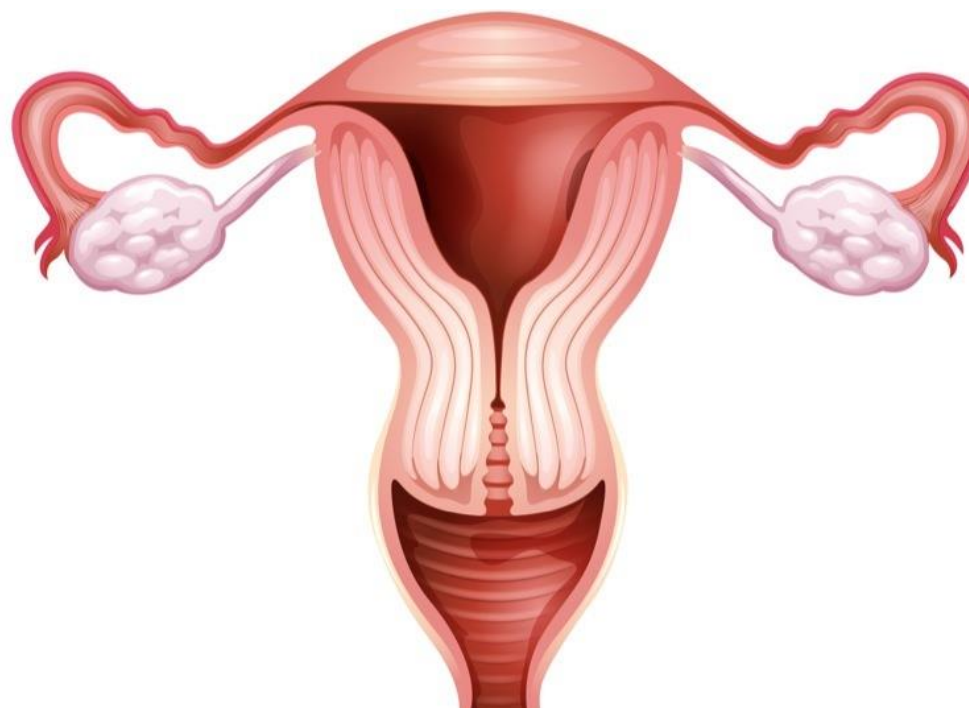
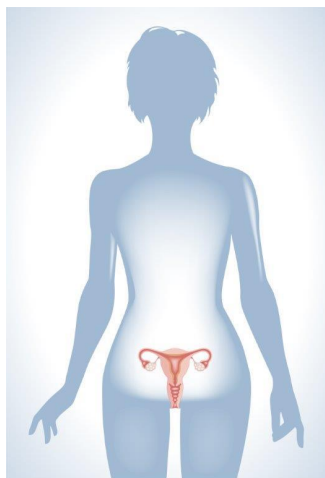


External Genitals



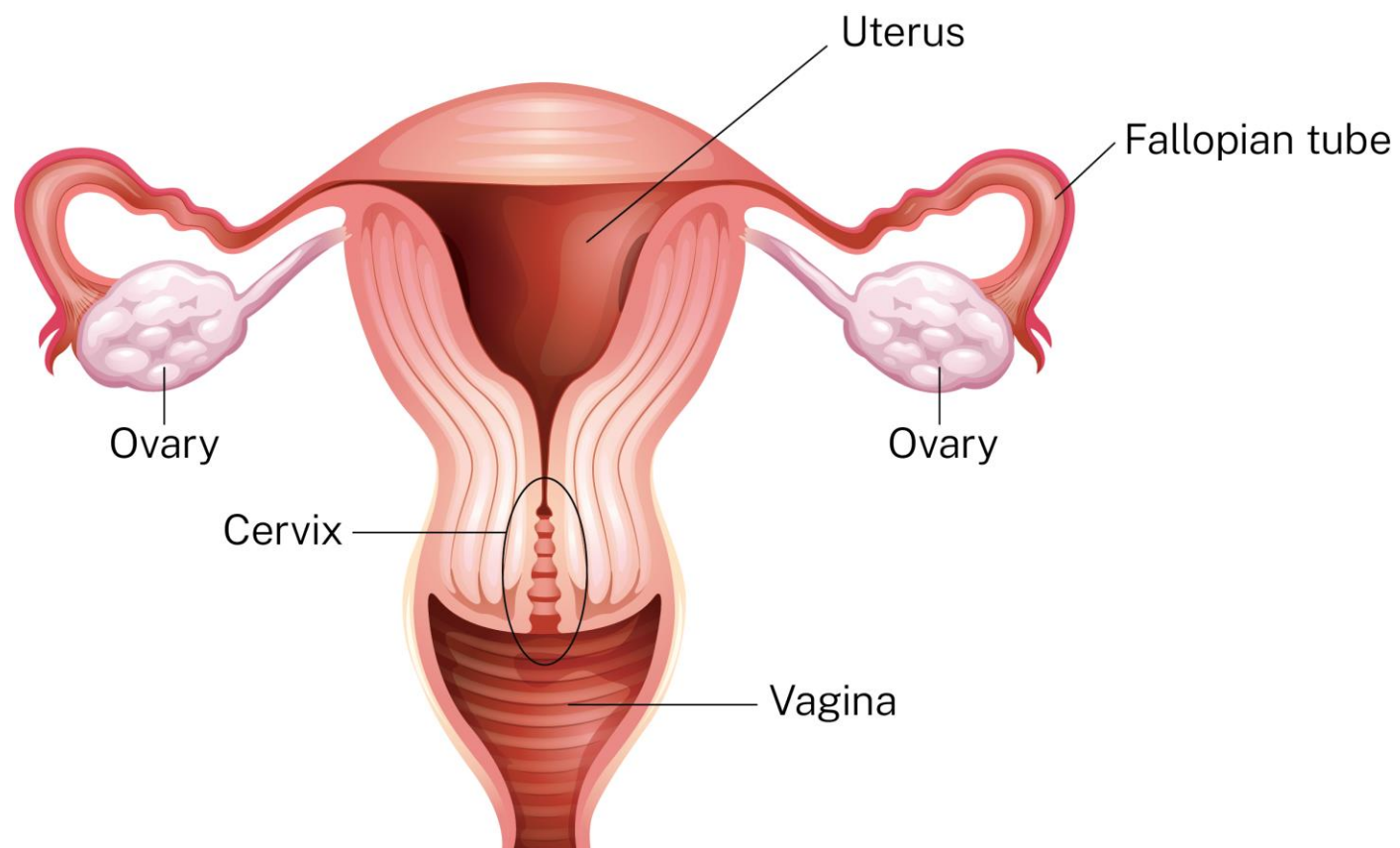


Internal Reproductive Organs



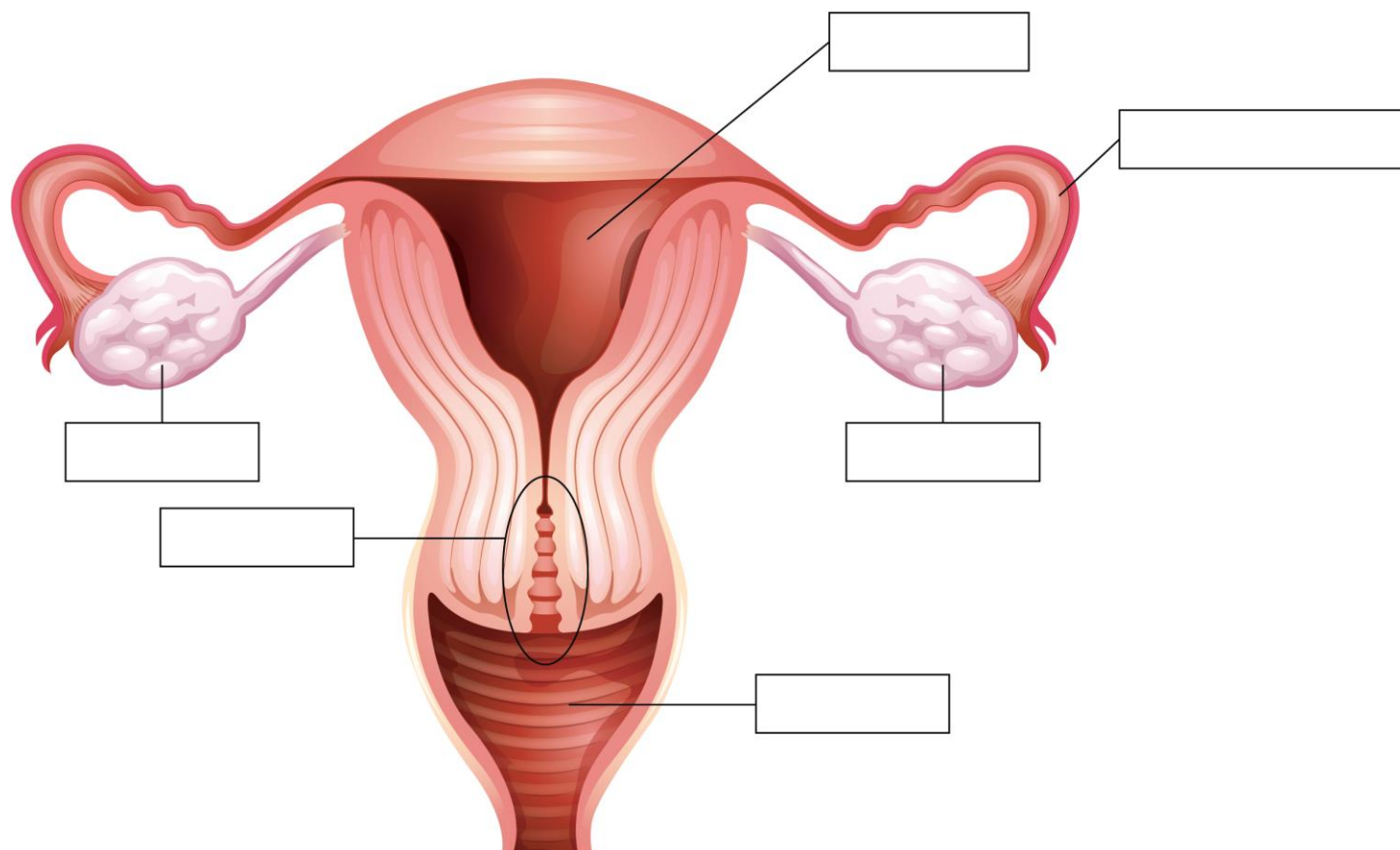


Internal Reproductive Organs



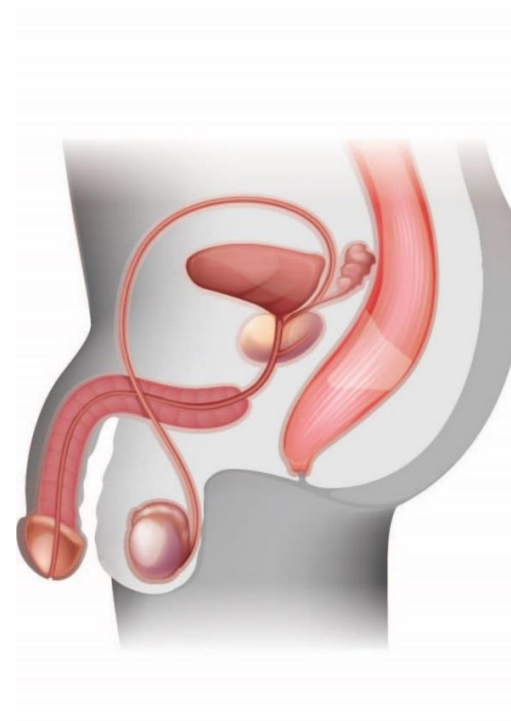
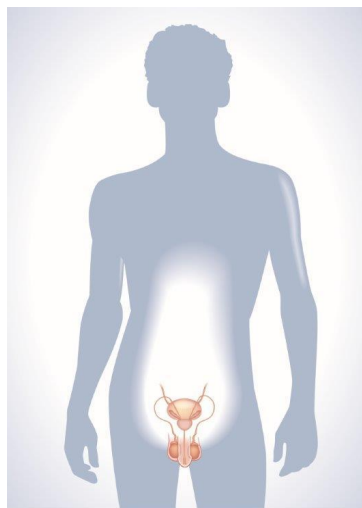


Internal Reproductive Organs



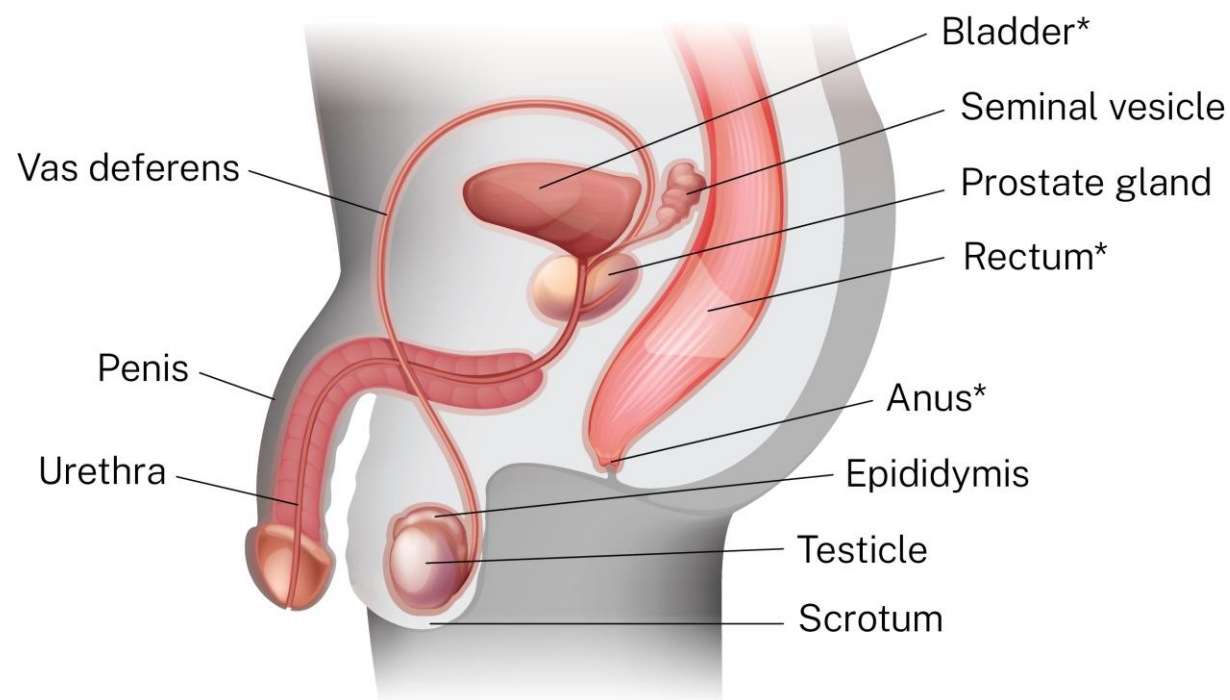


Internal Reproductive Organs



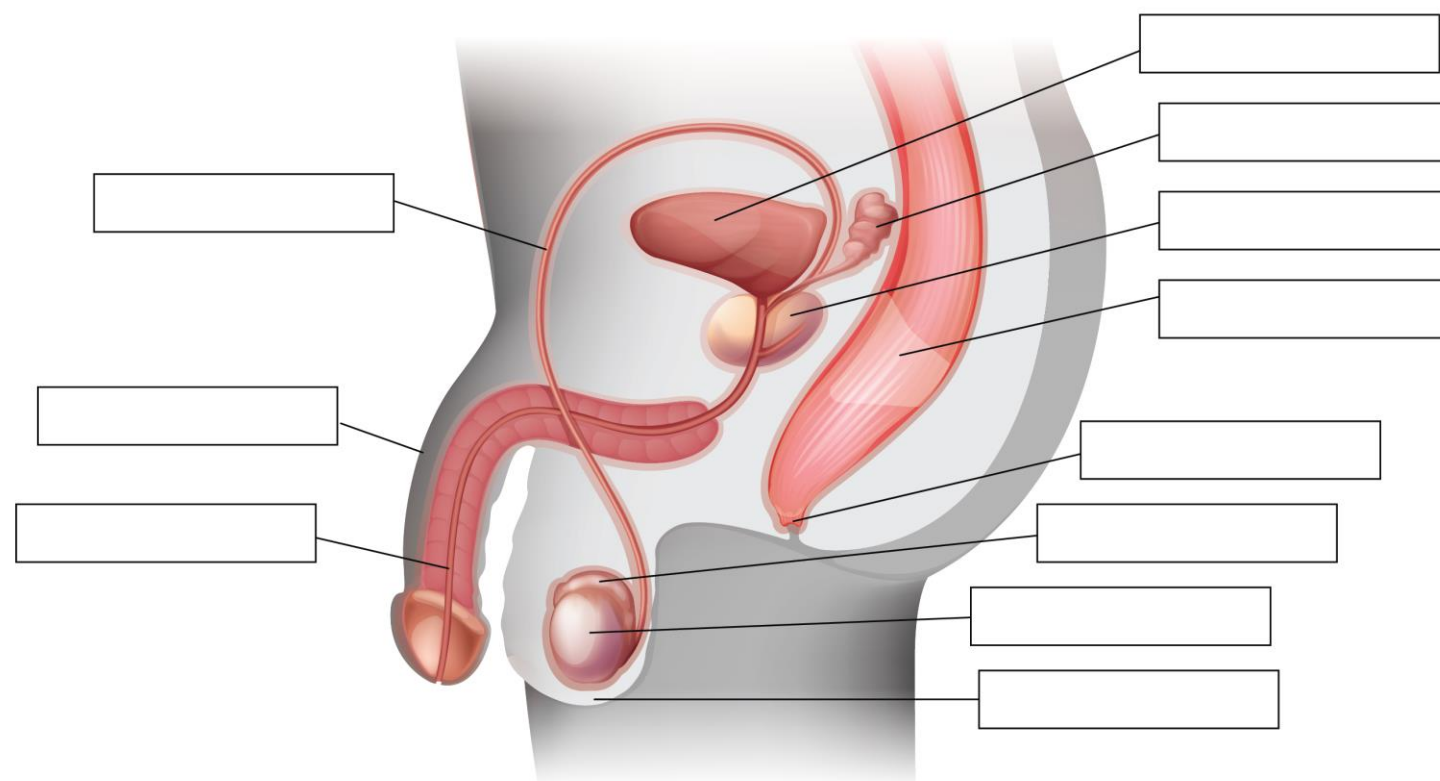


Internal Reproductive Organs





Internal Reproductive Organs





Primary Sex Characteristics

- Another name for sex organs
 - Penis, testes, scrotum
 - Ovaries, fallopian tubes, uterus, cervix, vagina, vulva





Secondary Sex Characteristics

- A physical characteristic that is related to sex but is not directly part of the reproductive system.
- Usually start to appear during puberty
- Examples:
 - Breast development
 - Pubic hair, facial hair
 - Wider shoulders and hips
 - Sweat glands
 - Voice changes





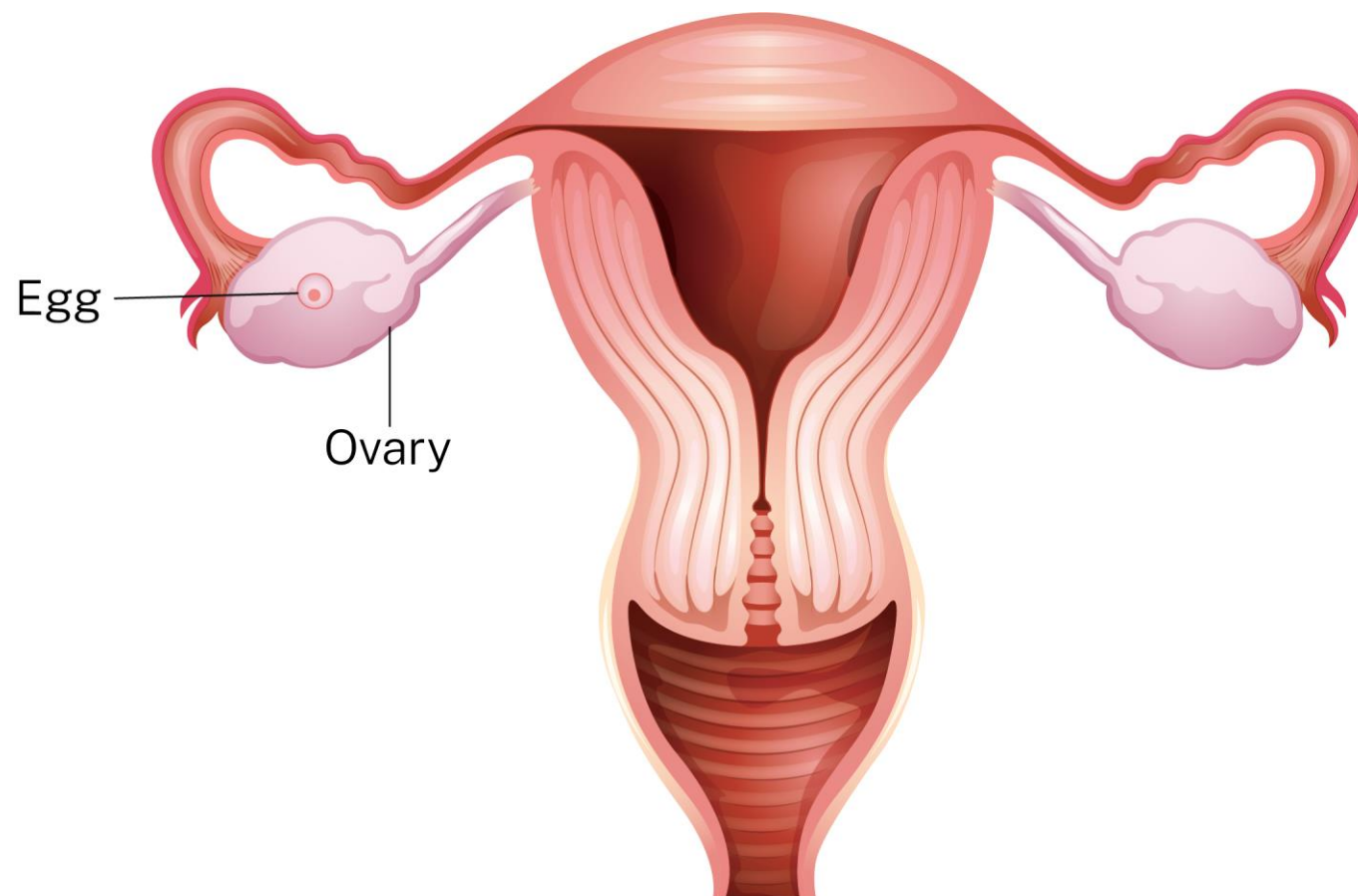
Ovulation

Ovulation occurs when an egg releases from an ovary.





Ovulation





Menstrual Cycle

Menstruation is the monthly cycle that prepares the body for a possible pregnancy.

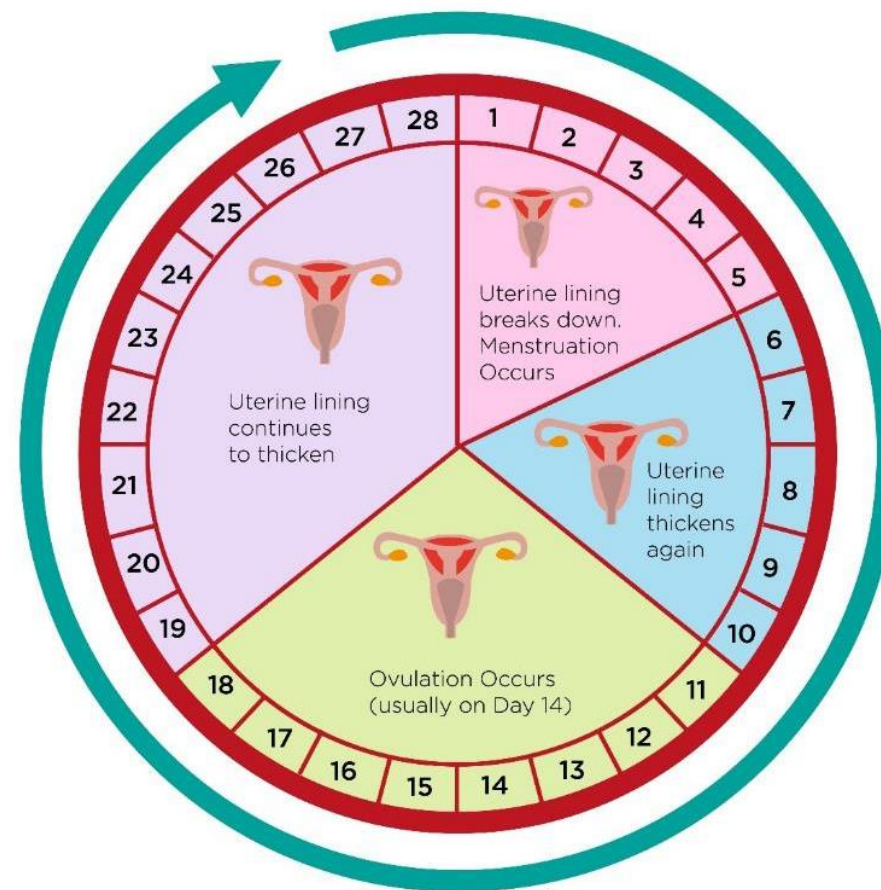




Menstrual Cycle

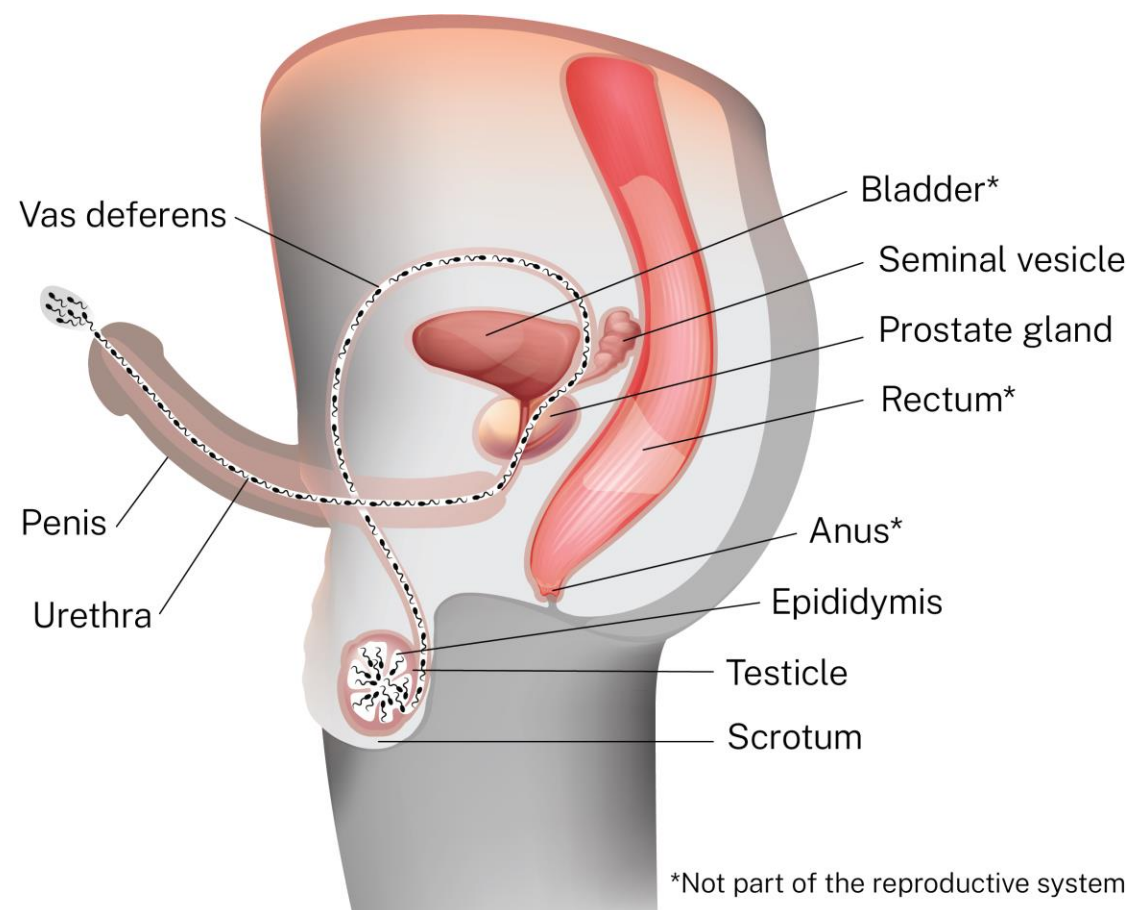
This diagram shows an average menstrual cycle of 28 days.

Cycles can vary in length from 21-35 days, or even 21-45 days in young people when they first start menstruating.





Sperm Production





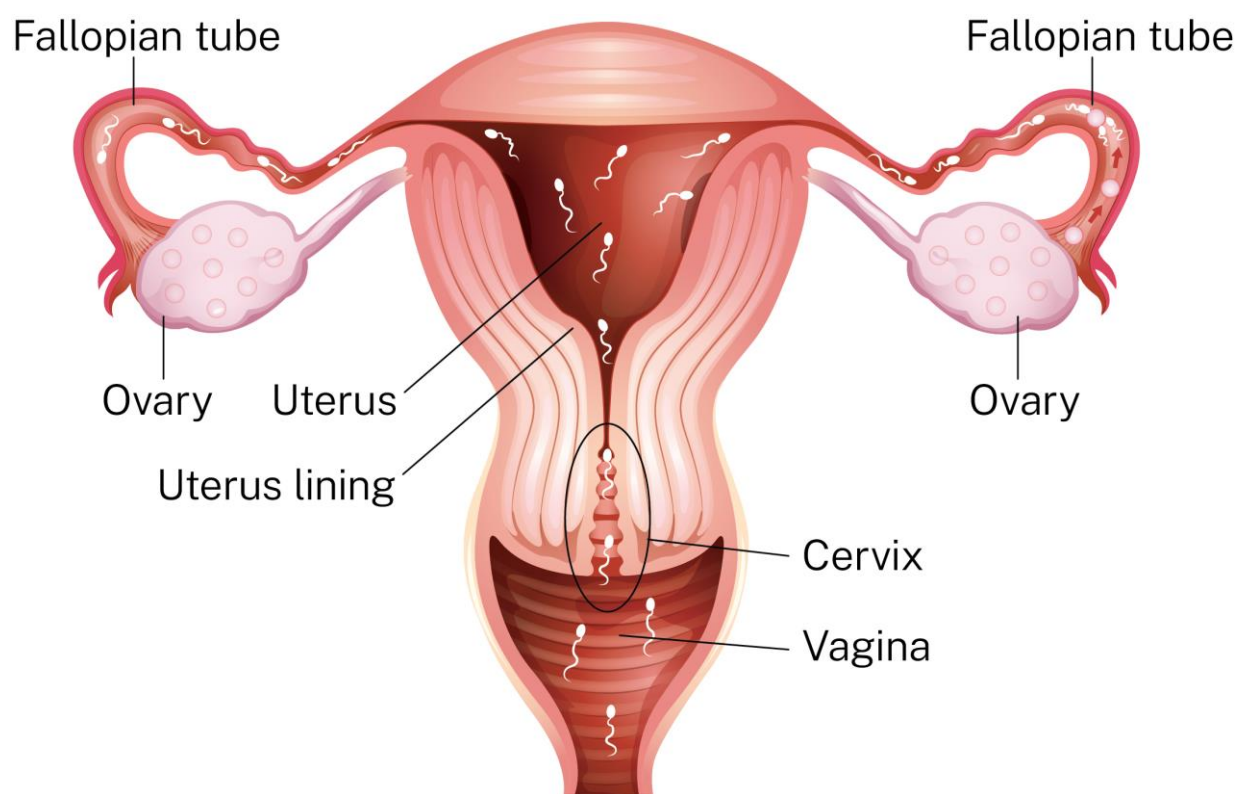
Human Reproduction

Human reproduction occurs when a sperm cell and egg cell join together (fertilization) and implant in the uterus (implantation).



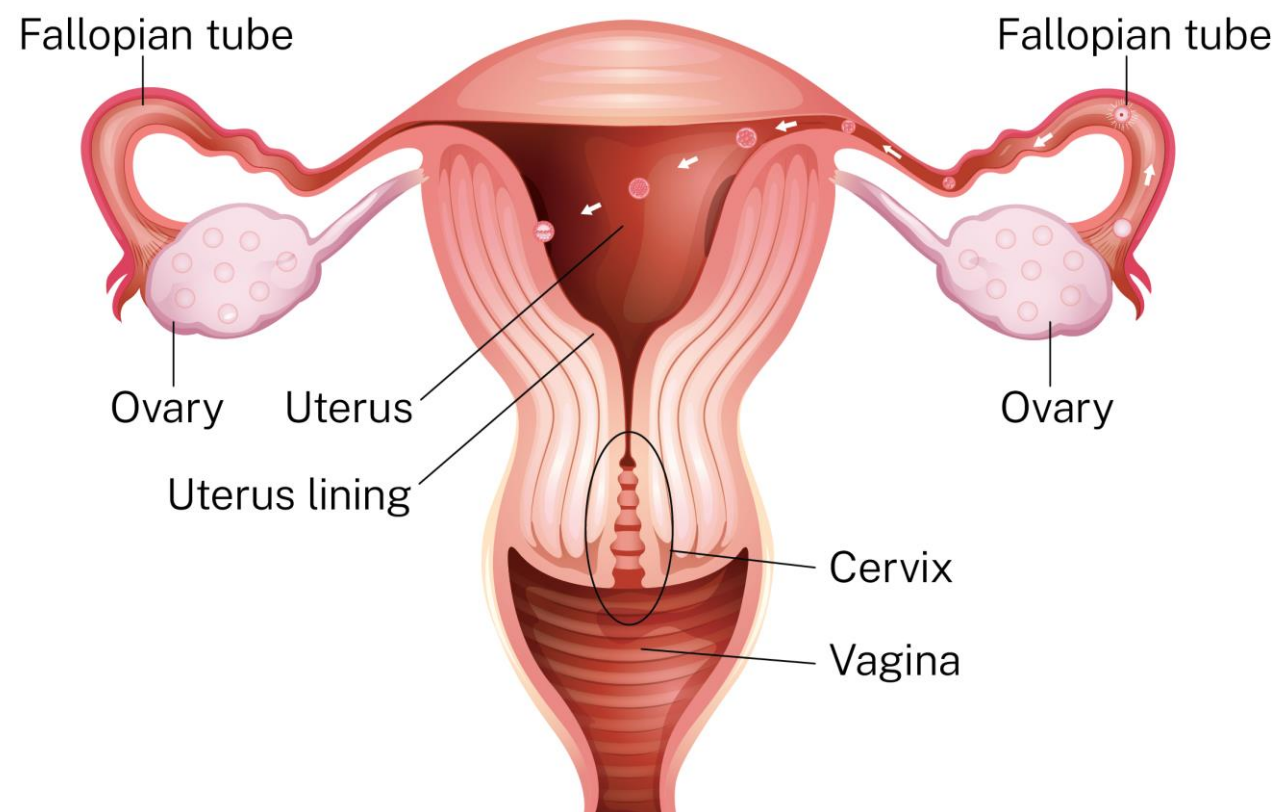


Fertilization





Implantation



© 2025, Primary Care, Student and Adult Health Promotion and Oral Health



This work is licensed under the Creative Commons Attribution-Non Commercial-No Derivative 4.0 International license. To view a copy of this license, see <https://creativecommons.org/licenses/by-nc-nd/4.0/>. You are free to copy and distribute the work including in other media and formats for non-commercial purposes, as long as you attribute the work to Primary Care Alberta, do not adapt the work, and abide by the other license terms. The license does not apply to Primary Care Alberta trademarks, logos or content for which Primary Care Alberta is not the copyright owner.

This material is intended for general information only and is provided on an "as is", "where is" basis. Although reasonable efforts were made to confirm the accuracy of the information, Primary Care Alberta does not make any representation or warranty, express, implied or statutory, as to the accuracy, reliability, completeness, applicability or fitness for a particular purpose of such information. This material is not a substitute for the advice of a qualified health professional. Primary Care Alberta expressly disclaims all liability for the use of these materials, and for any claims, actions, demands or suits arising from such use.