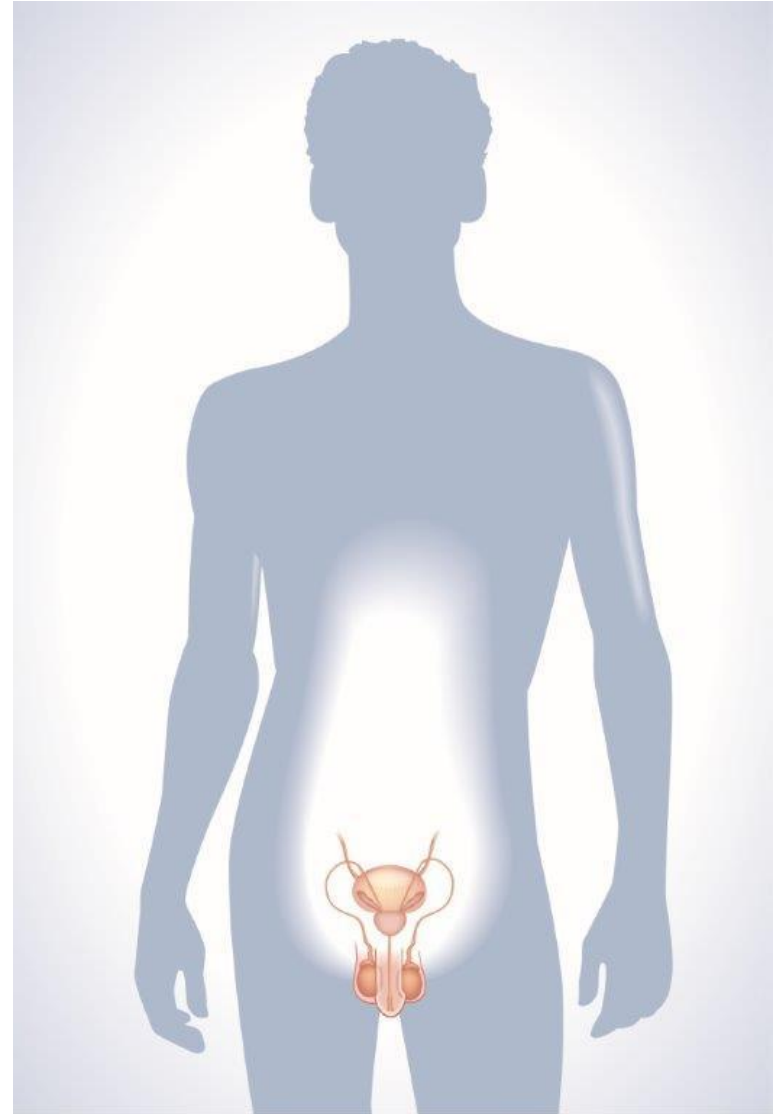
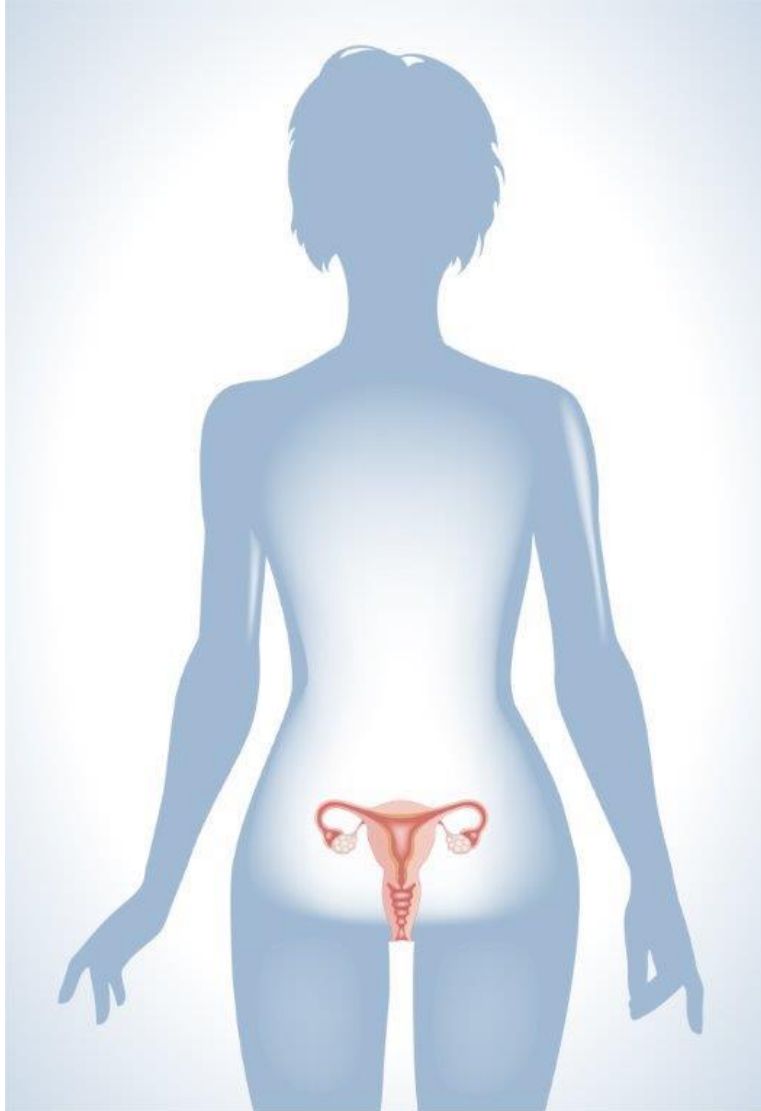


5e année

Appareils génitaux



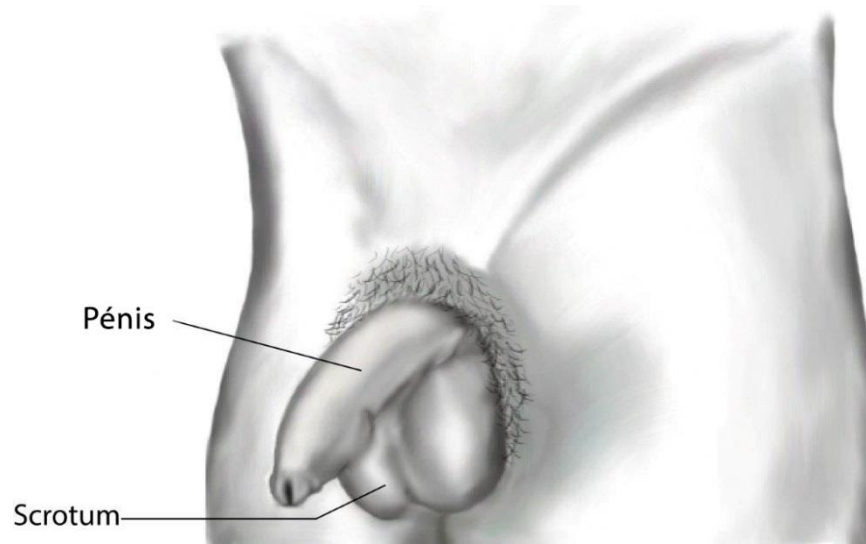
Appareil génital externe



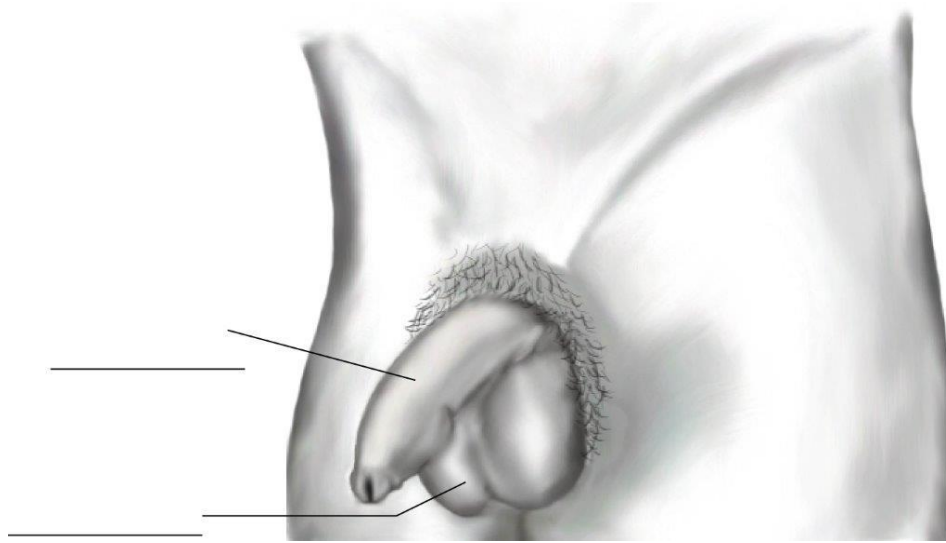
Appareil génital externe



Appareil génital externe



Appareil génital externe

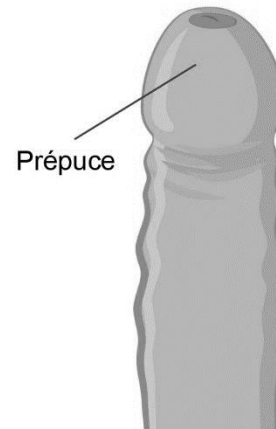


Appareil génital externe

Pénis circoncis



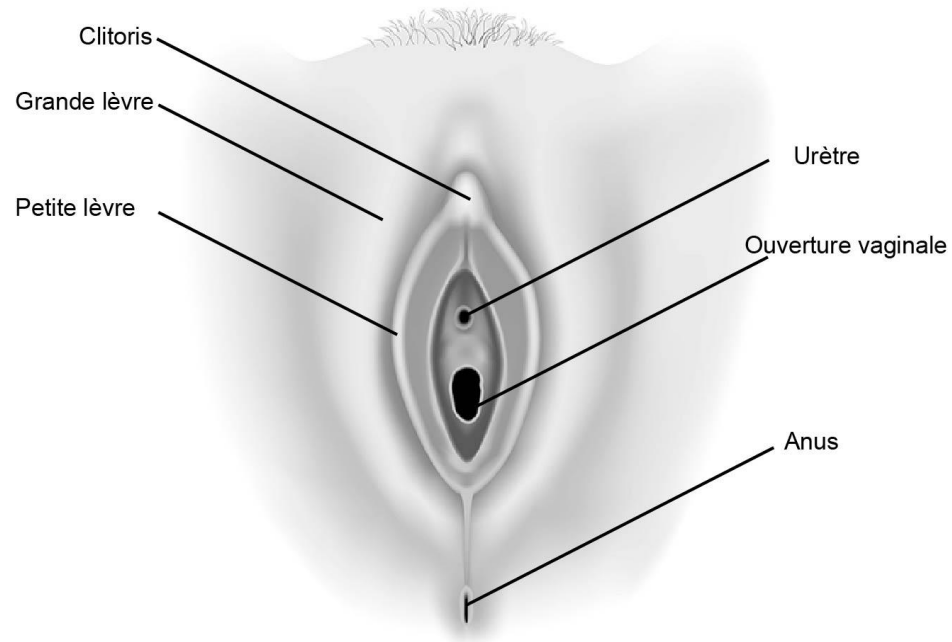
Pénis non circoncis



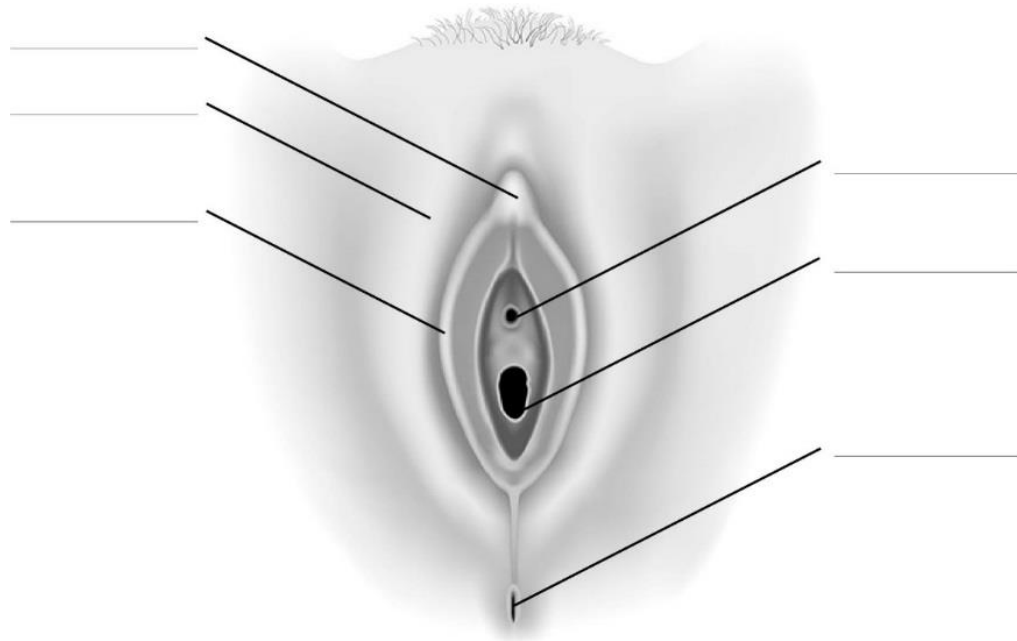
Appareil génital externe



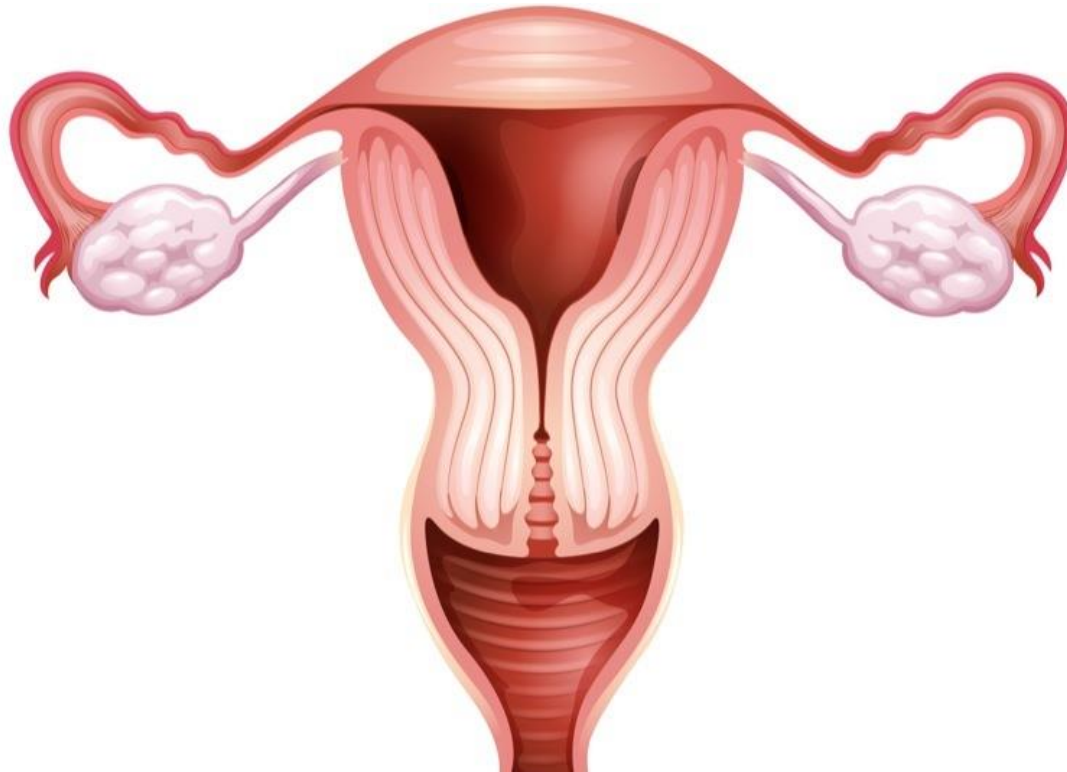
Appareil génital externe



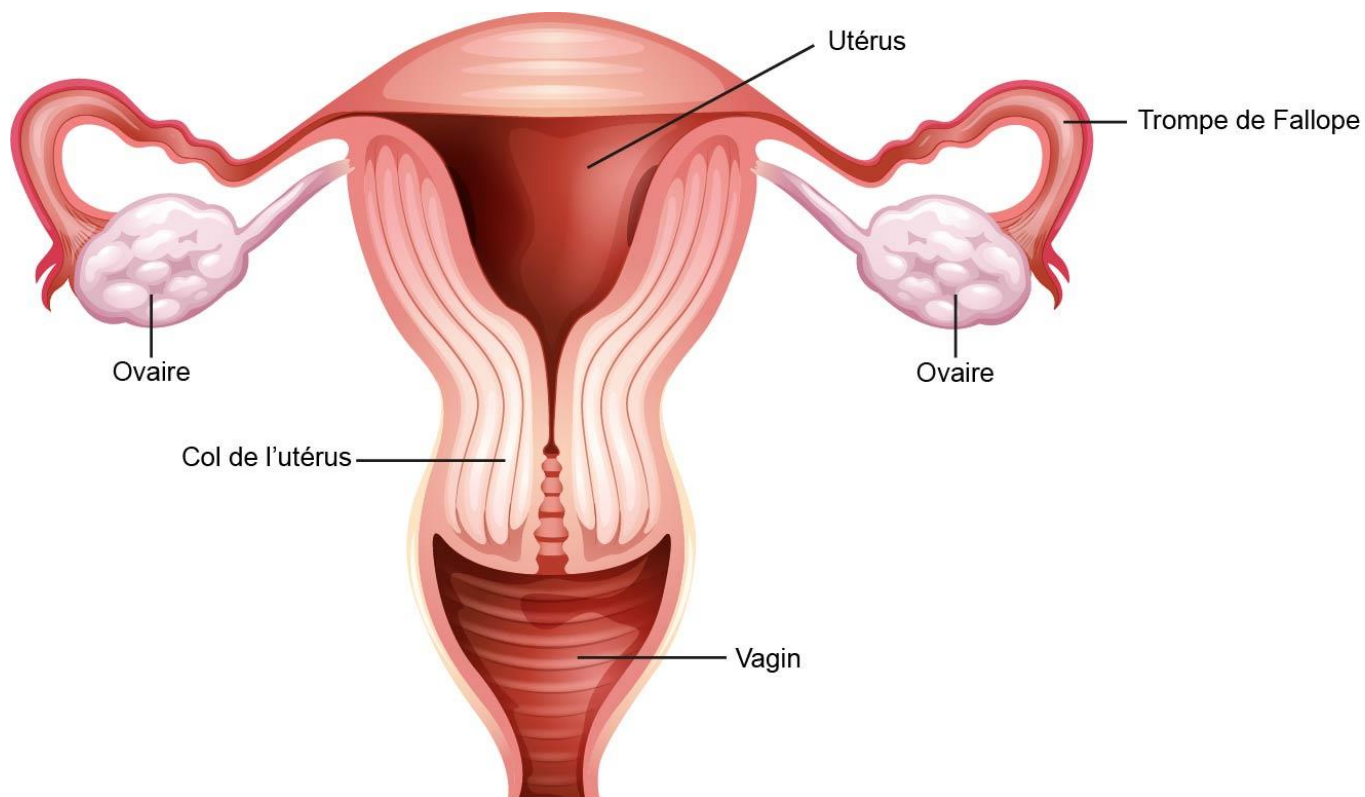
Appareil génital externe



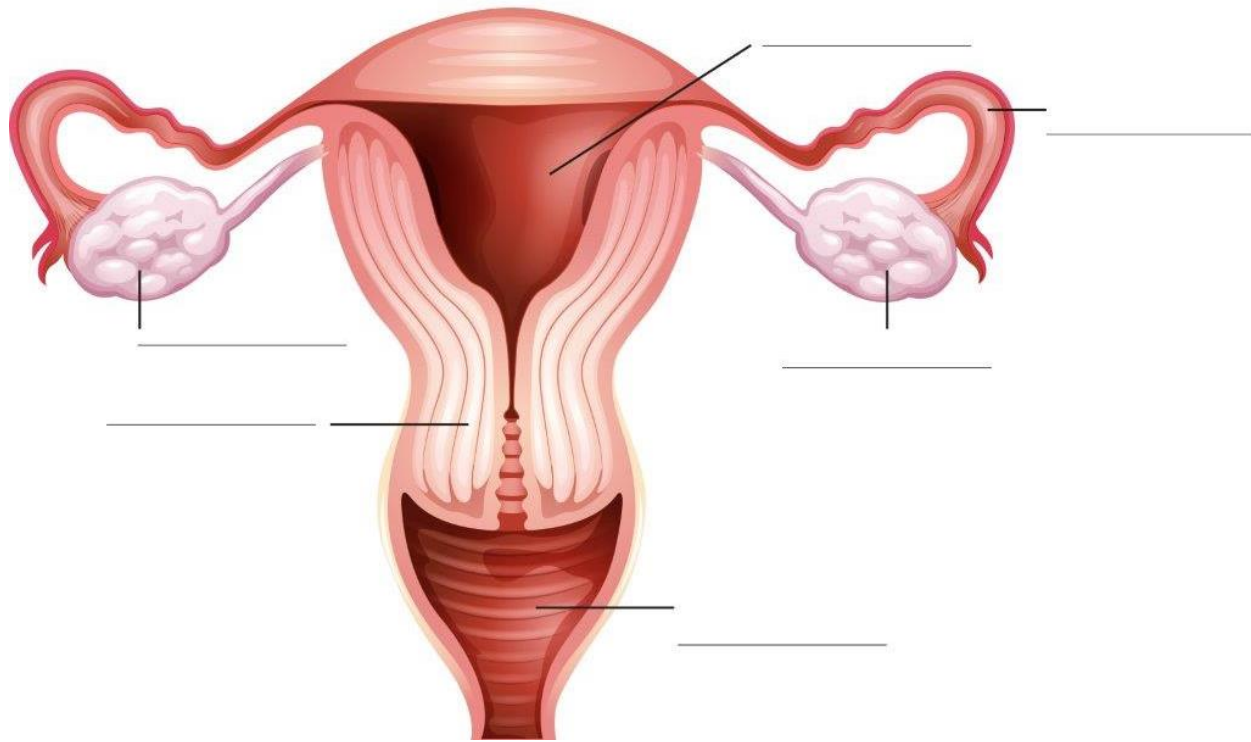
Organes de l'appareil génital interne



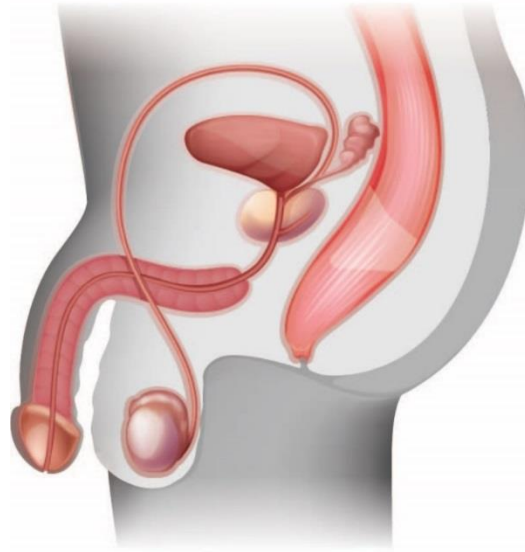
Organes de l'appareil génital interne



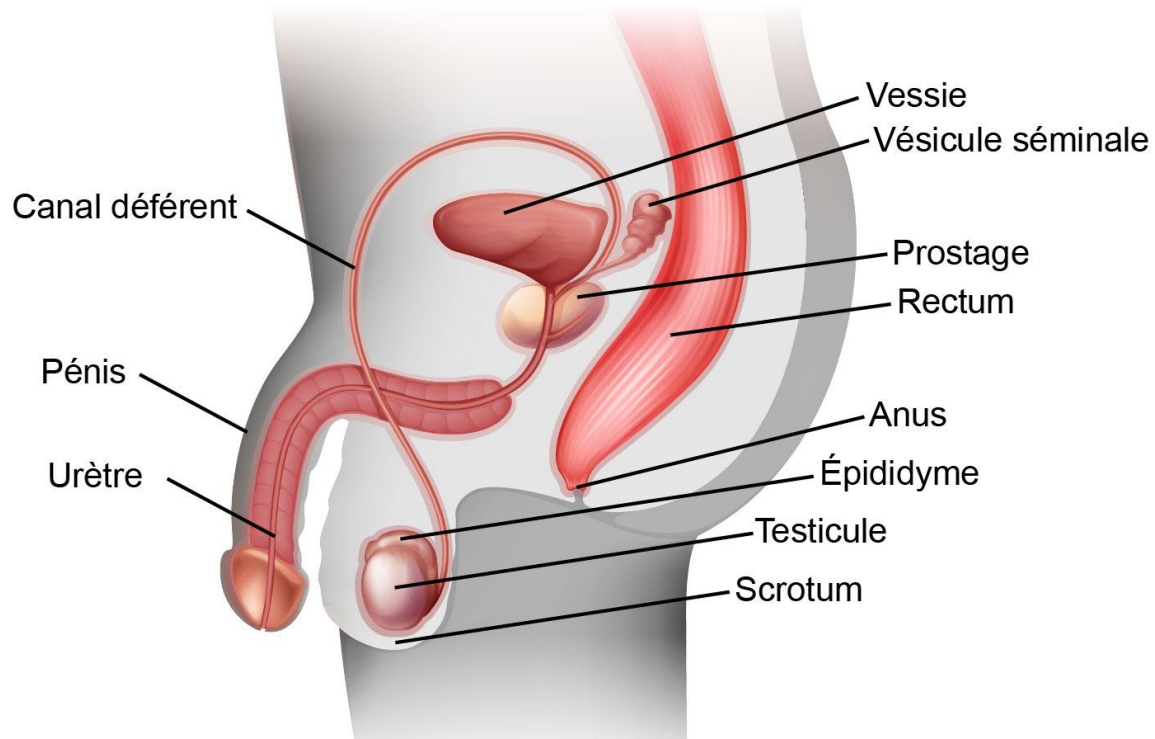
Organes de l'appareil génital interne



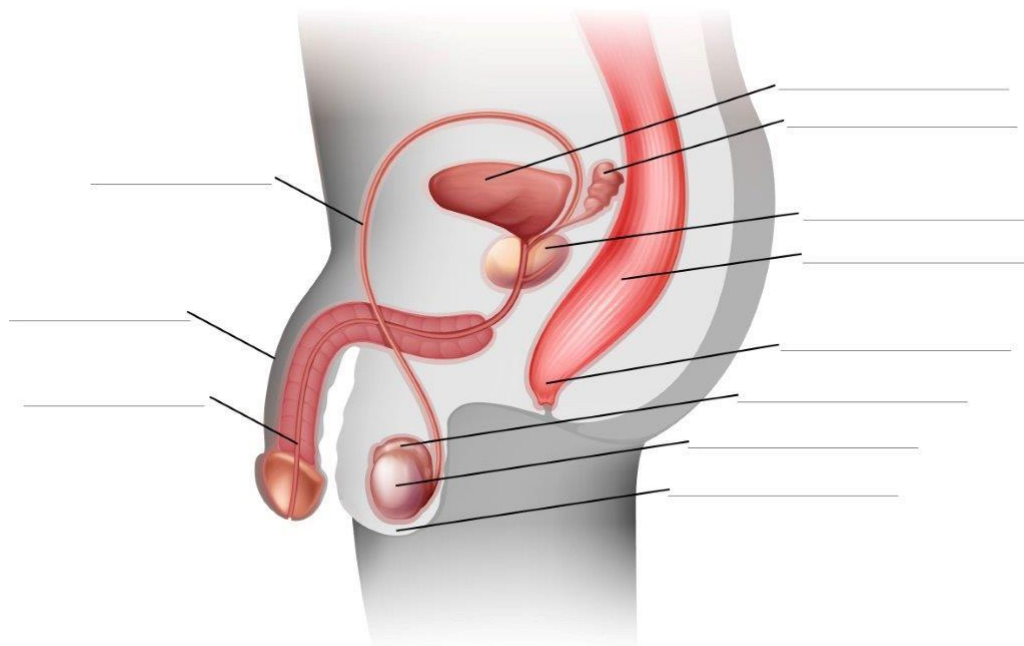
Organes de l'appareil génital interne



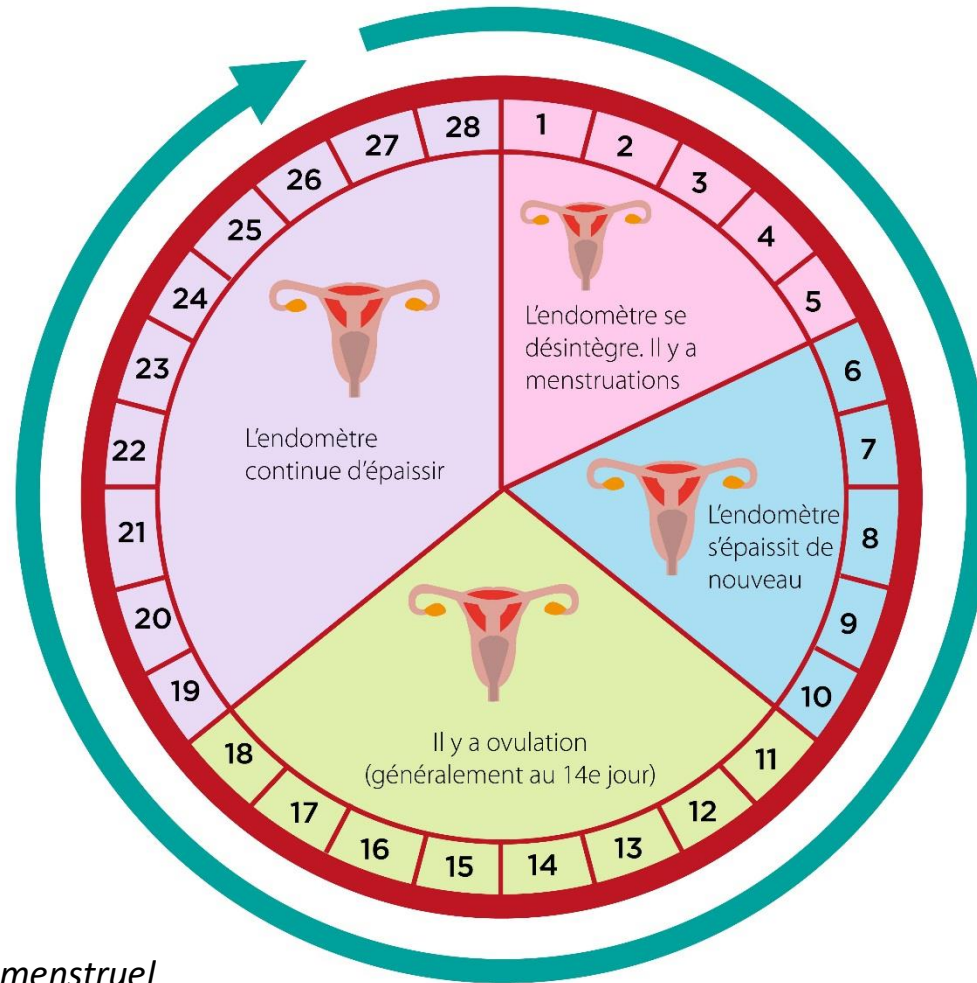
Organes de l'appareil génital interne



Organes de l'appareil génital interne

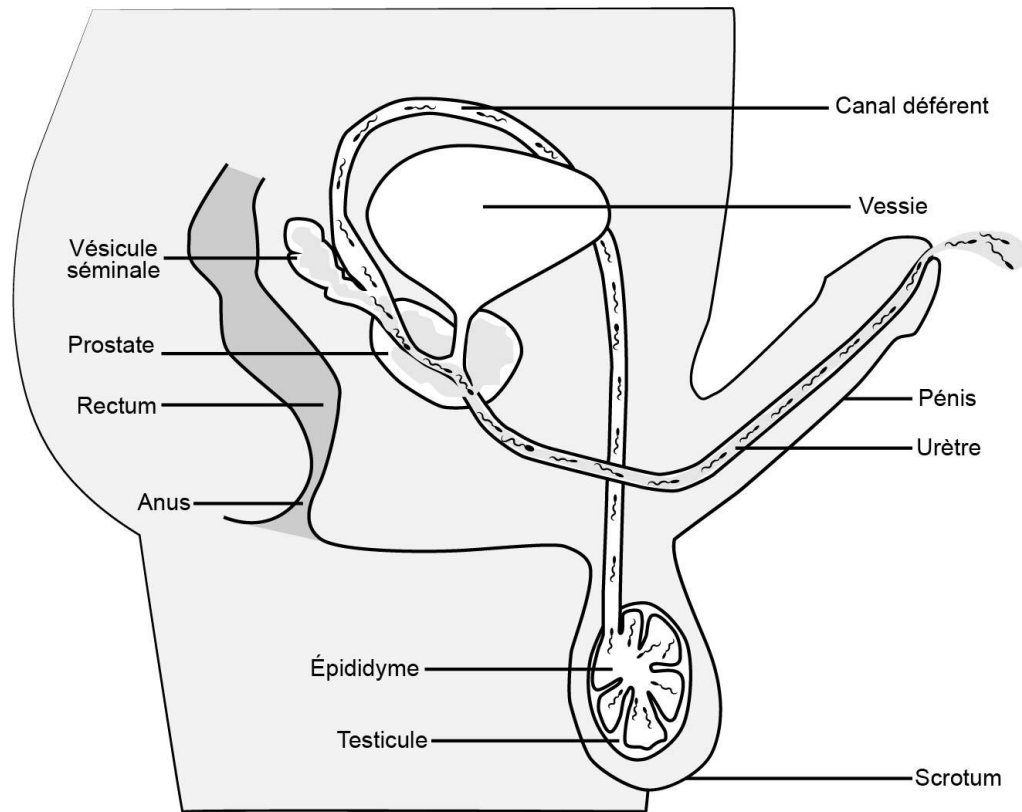


Le cycle menstruel

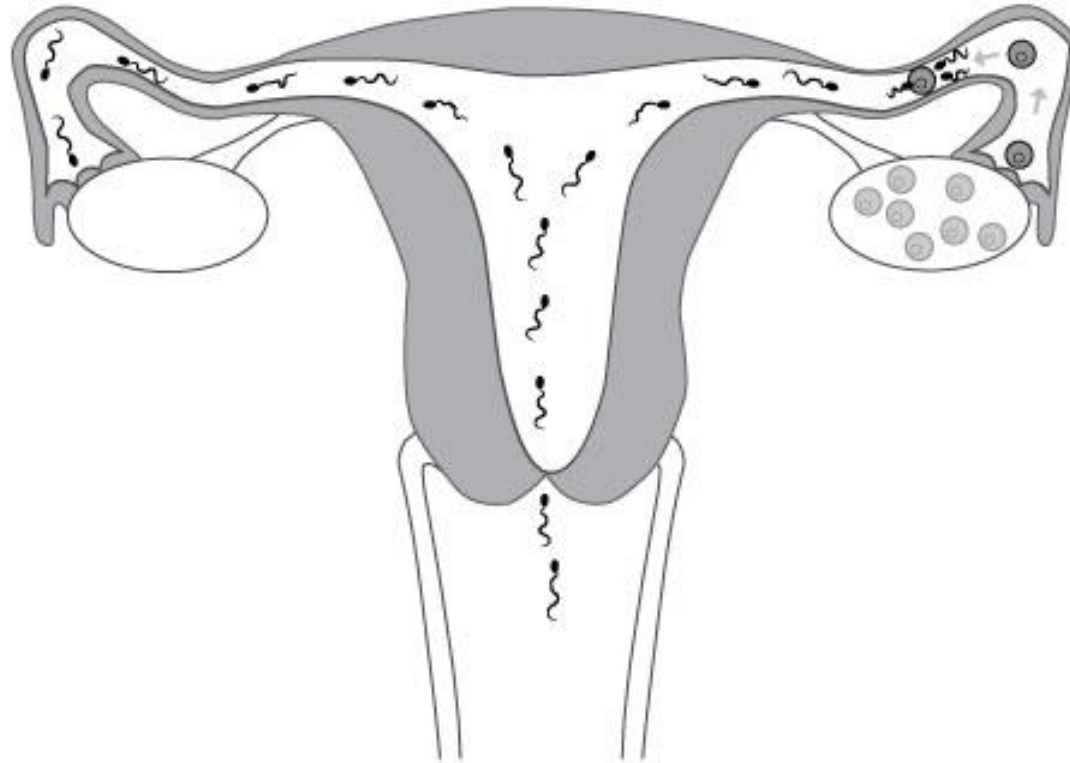


Ce schéma montre un cycle menstruel moyen d'une durée de 28 jours. Les cycles peuvent varier de 24 à 38 jours.

Production de spermatozoïdes



Fécondation



Nidation

