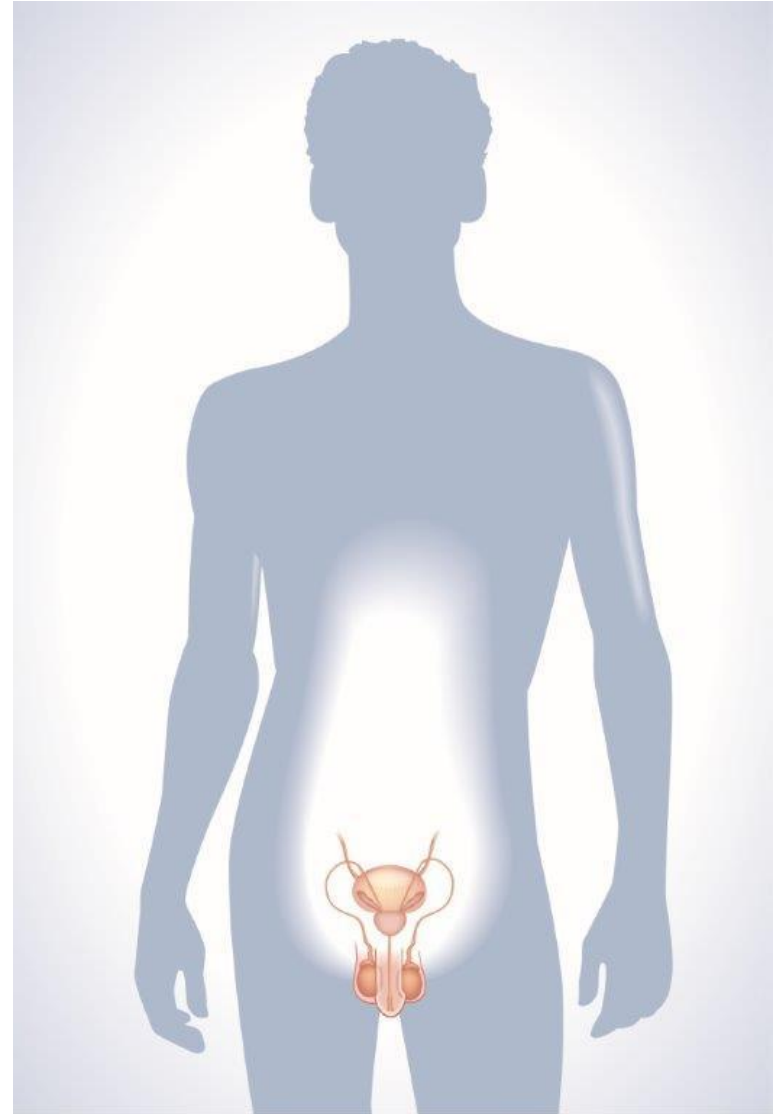
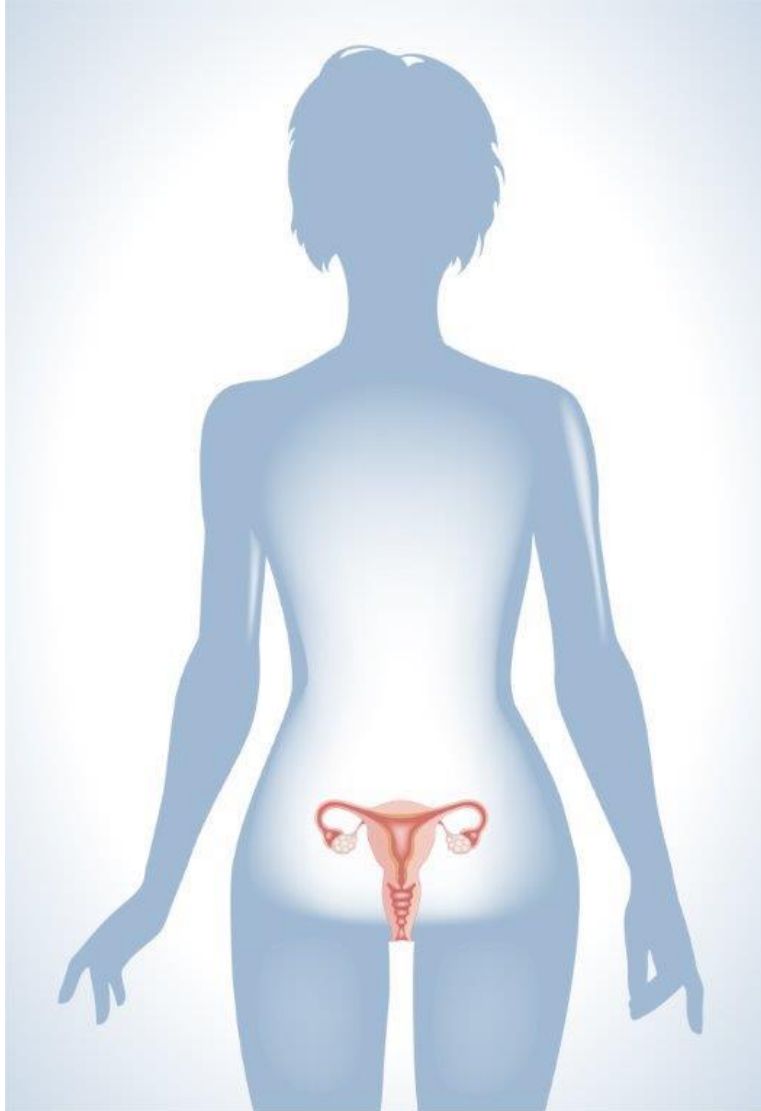


# Grade 5

# Reproductive Systems



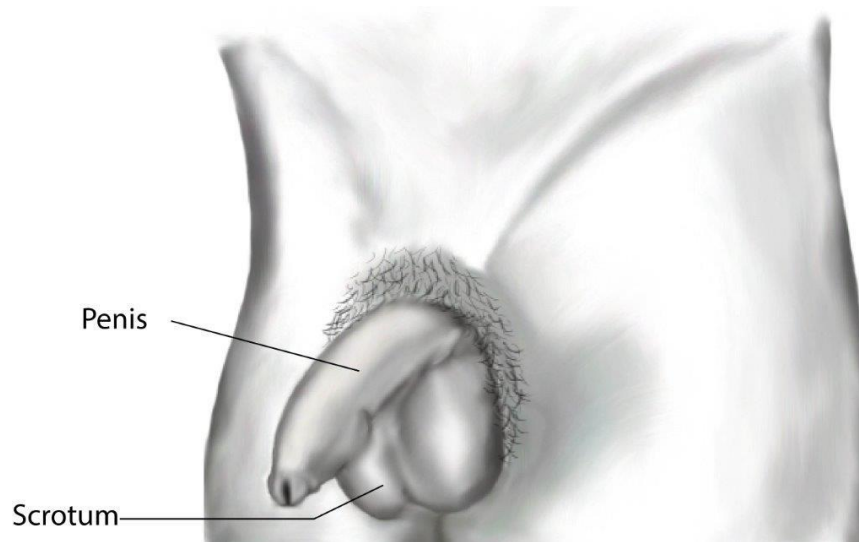
# External Genitals



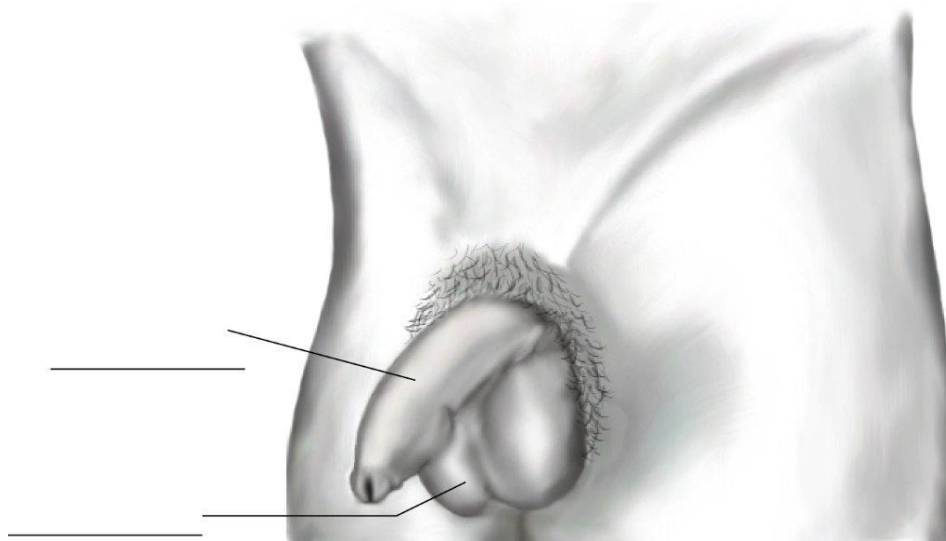
# External Genitals



# External Genitals



# External Genitals



# External Genitals

Circumcised Penis



Uncircumcised Penis

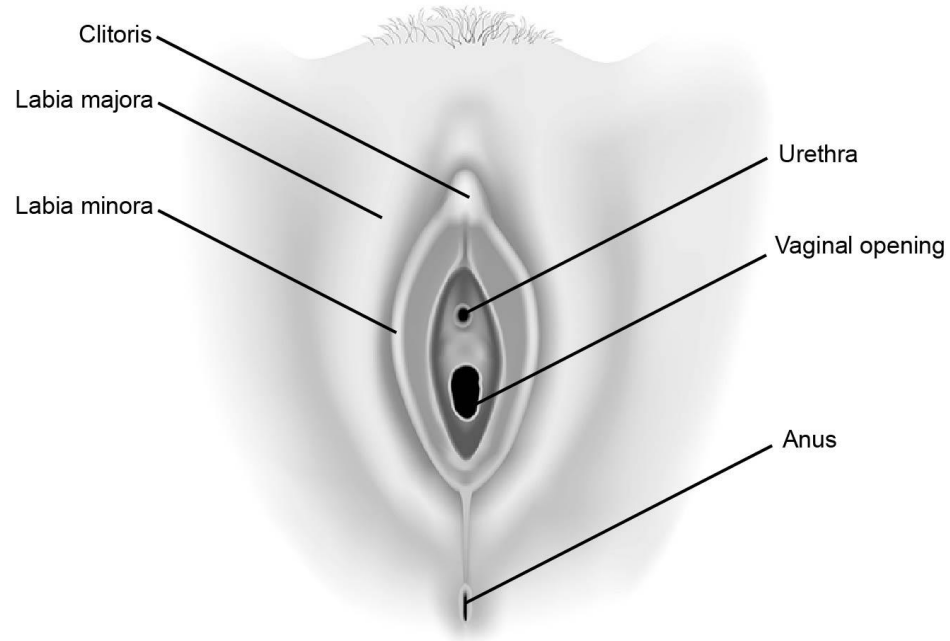


# External Genitals

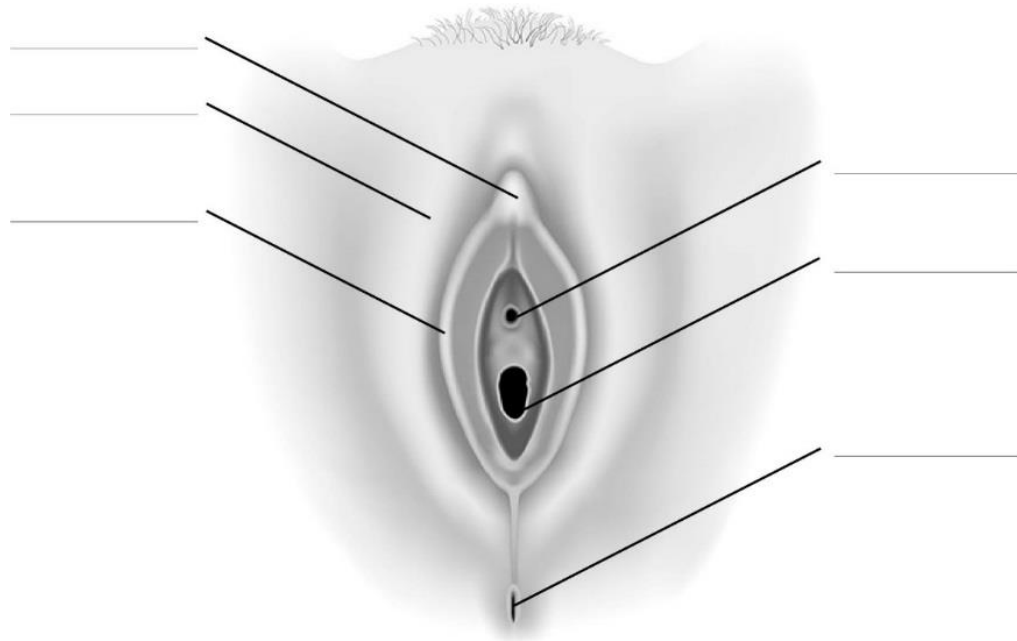




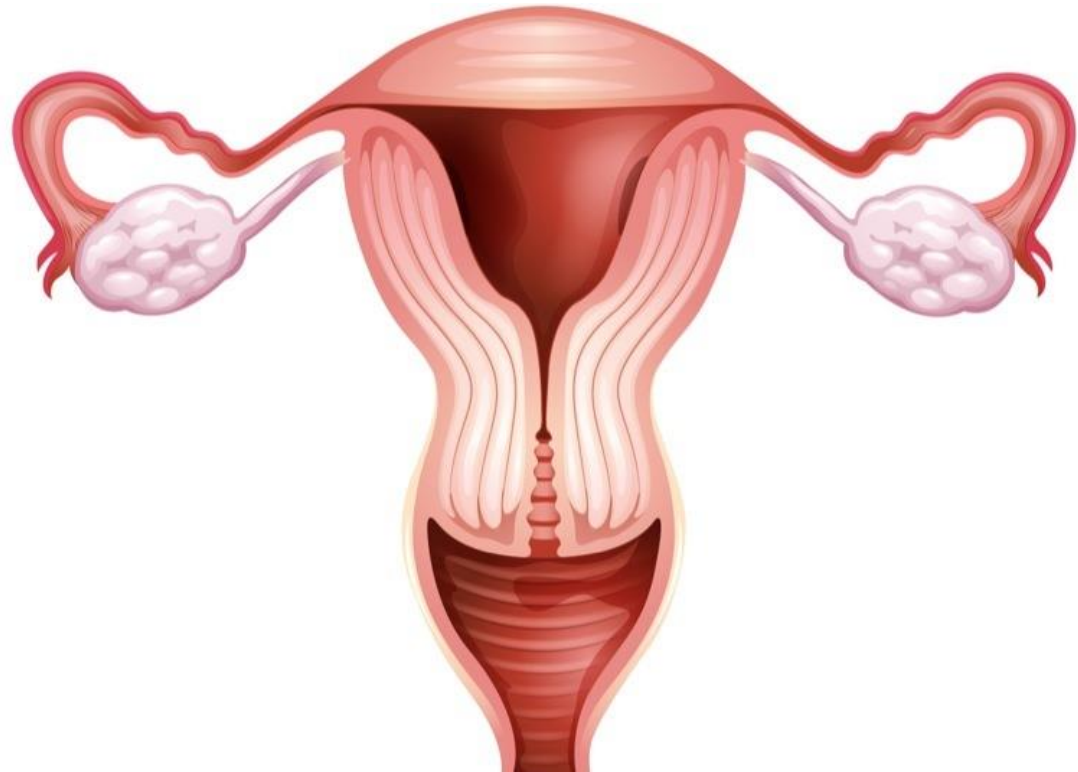
# External Genitals



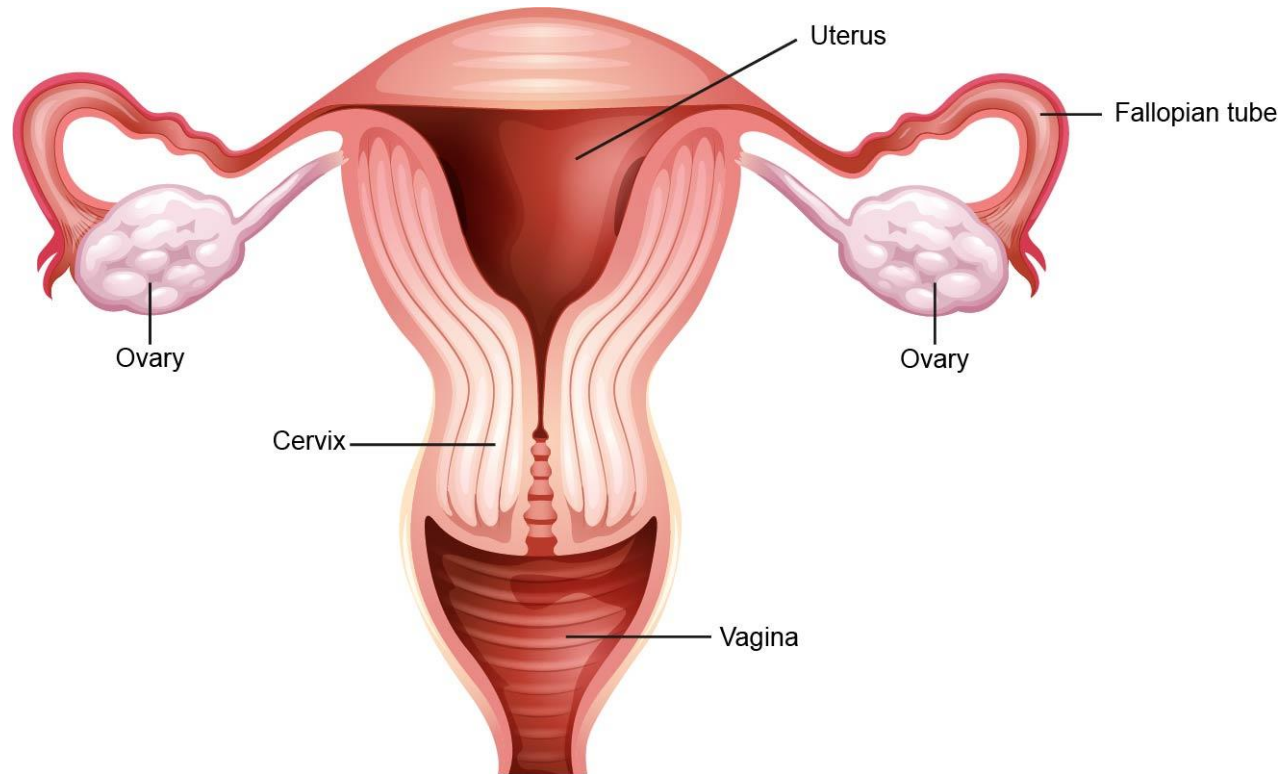
# External Genitals



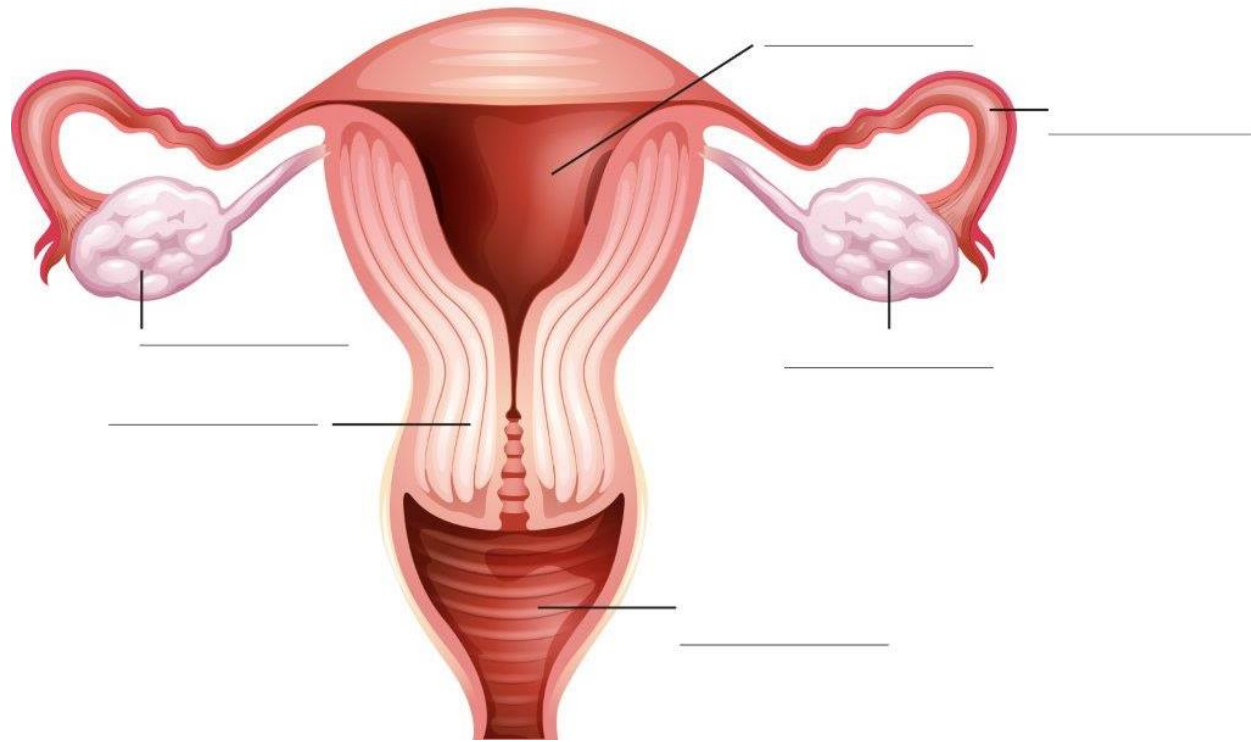
# Internal Reproductive Organs



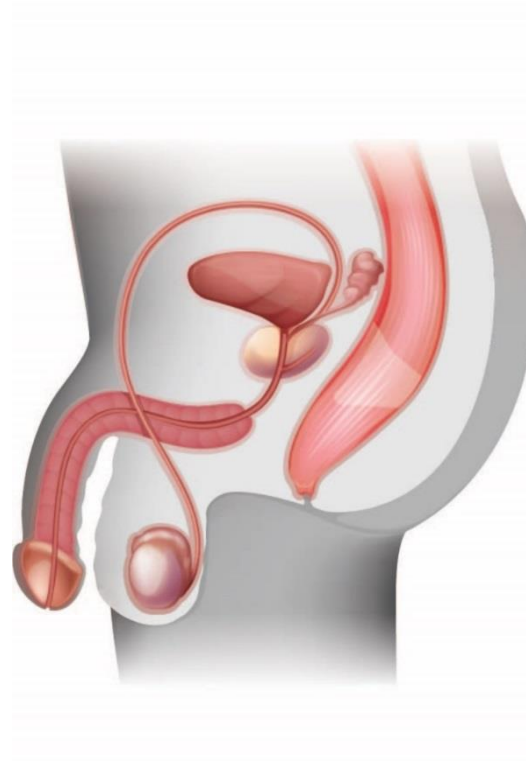
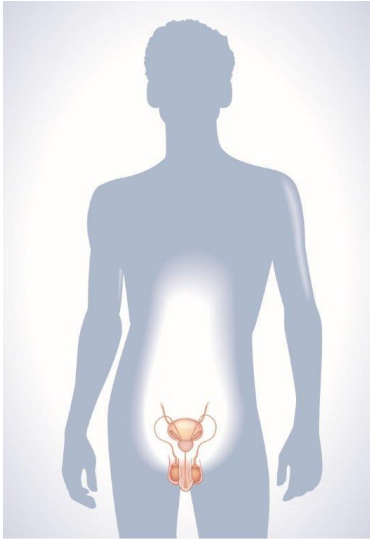
# Internal Reproductive Organs



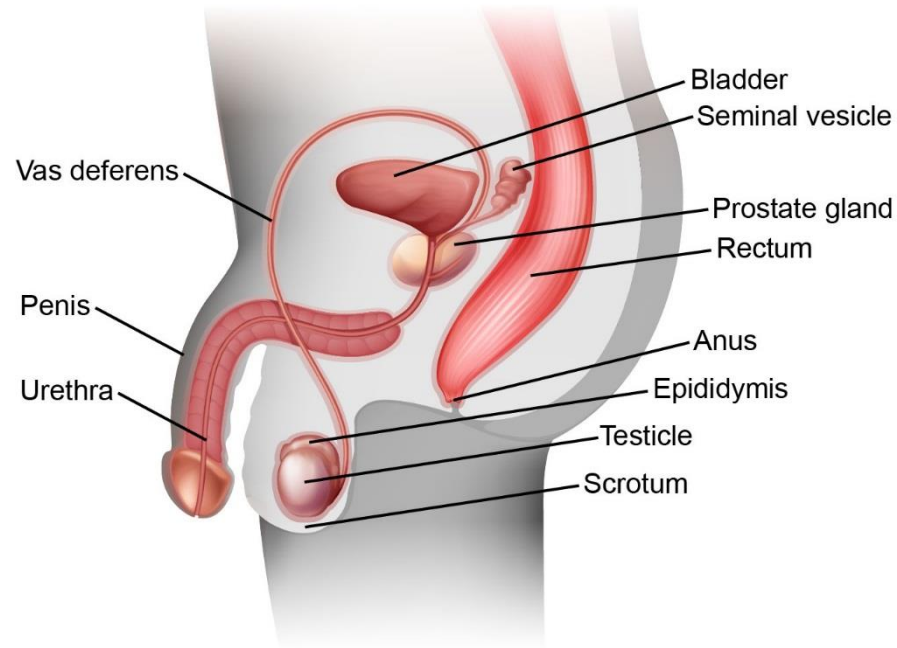
# Internal Reproductive Organs



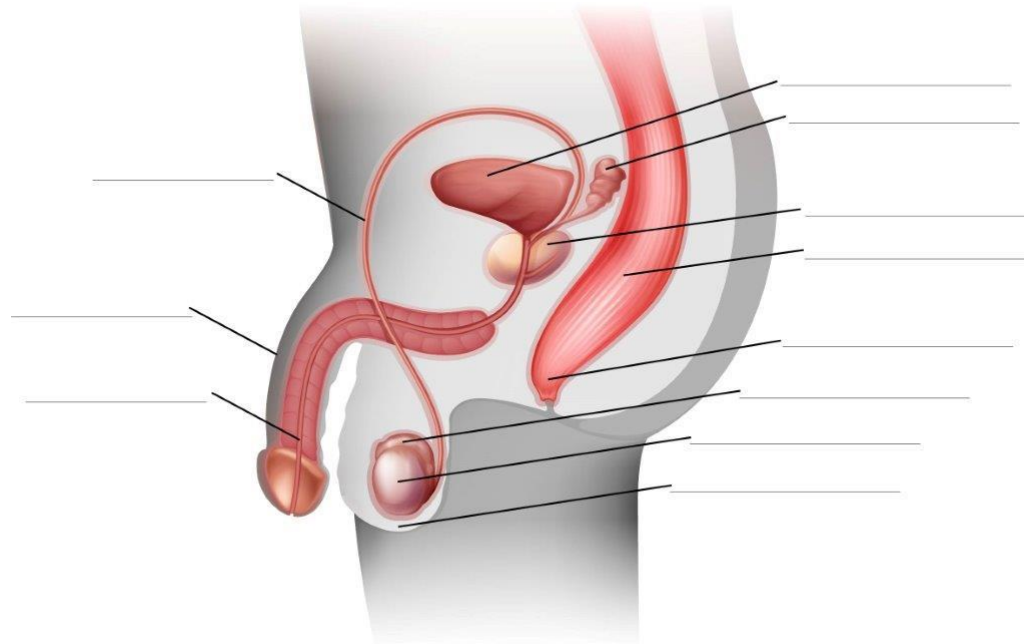
# Internal Reproductive Organs



# Internal Reproductive Organs

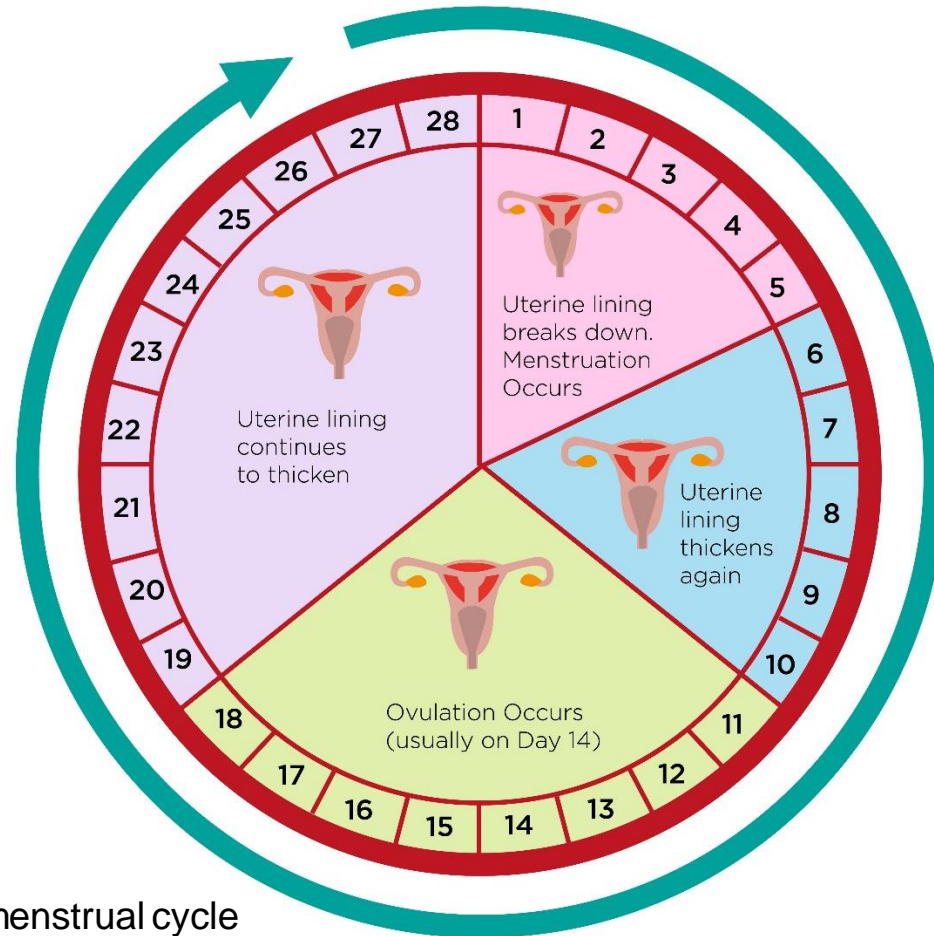


# Internal Reproductive Organs



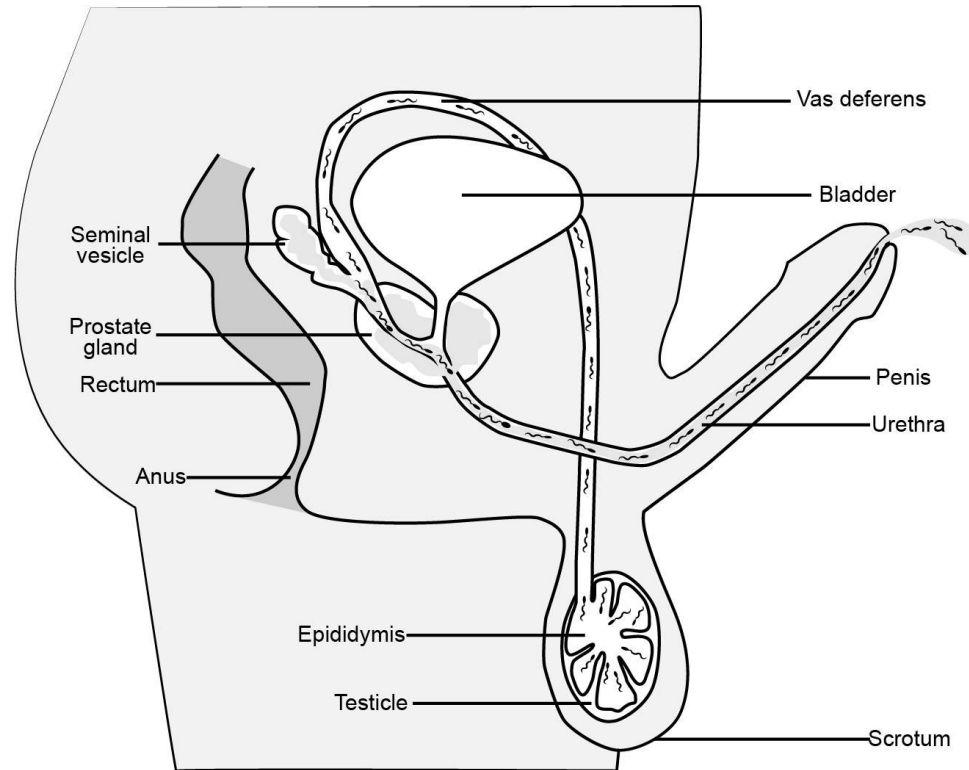


# Menstrual Cycle

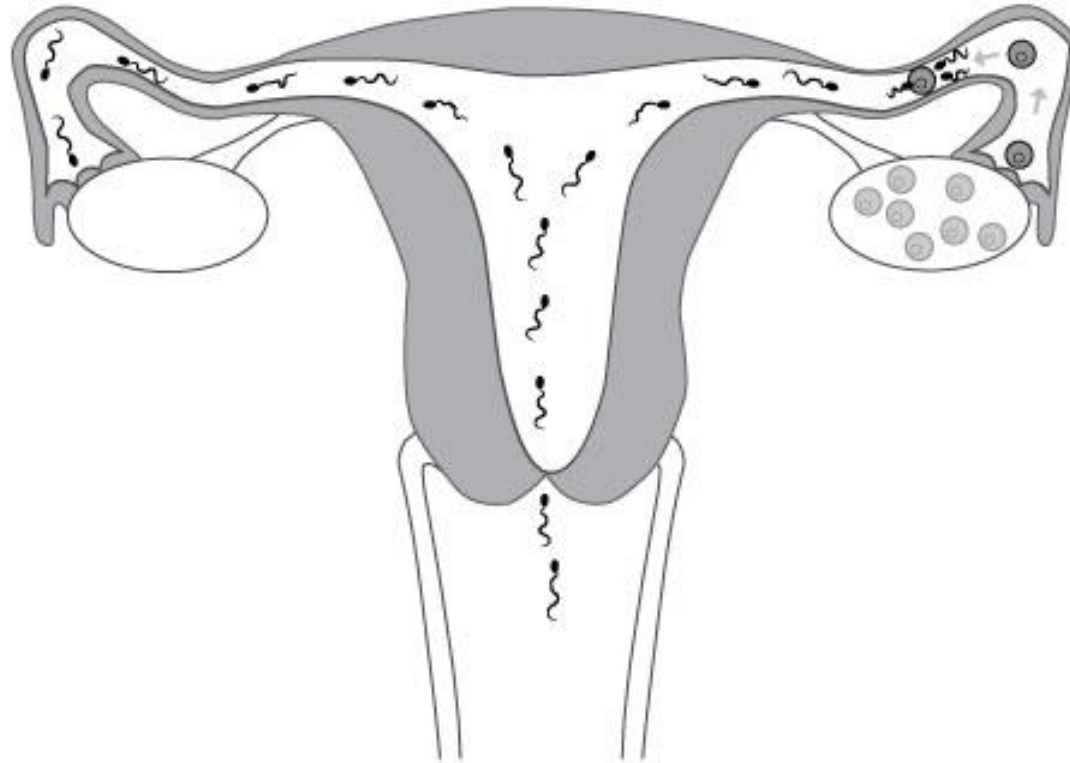


This diagram shows a menstrual cycle of 28 days, which is an average. Cycles can vary between 24-38 days long.

# Sperm Production



# Fertilization



# Implantation

