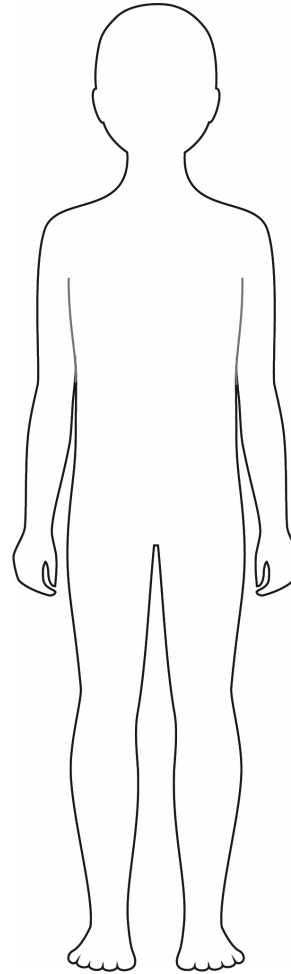
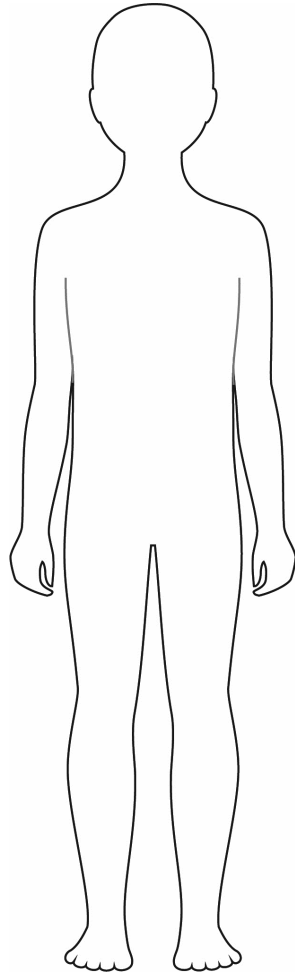


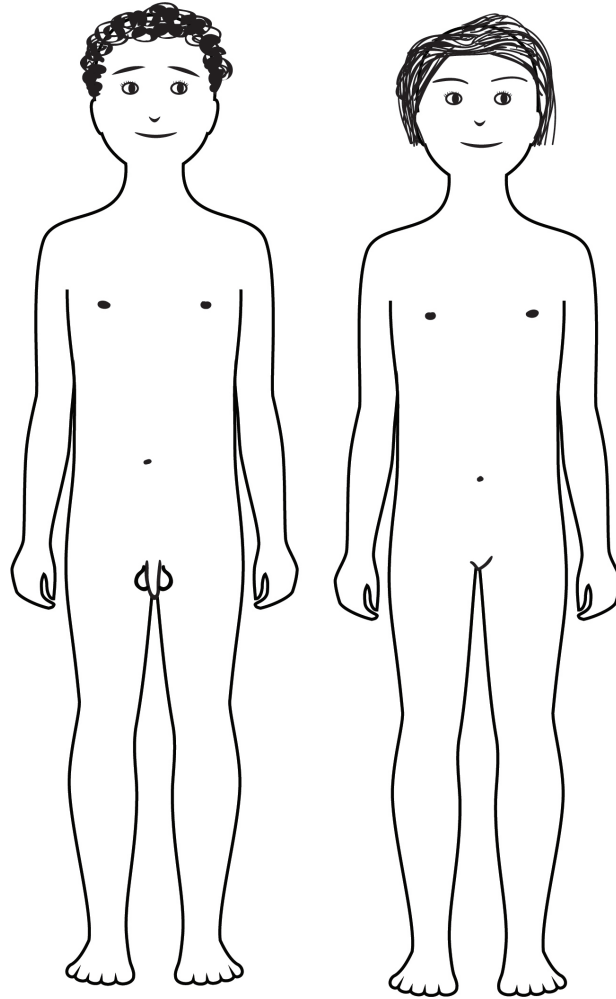


# Understanding My Body

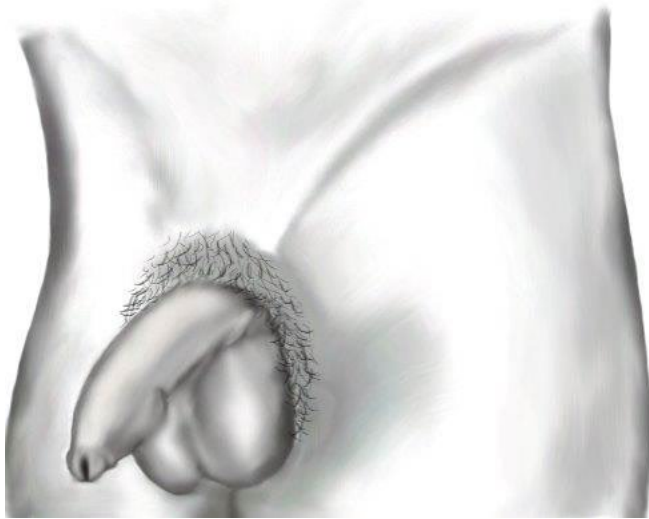
# Body Parts



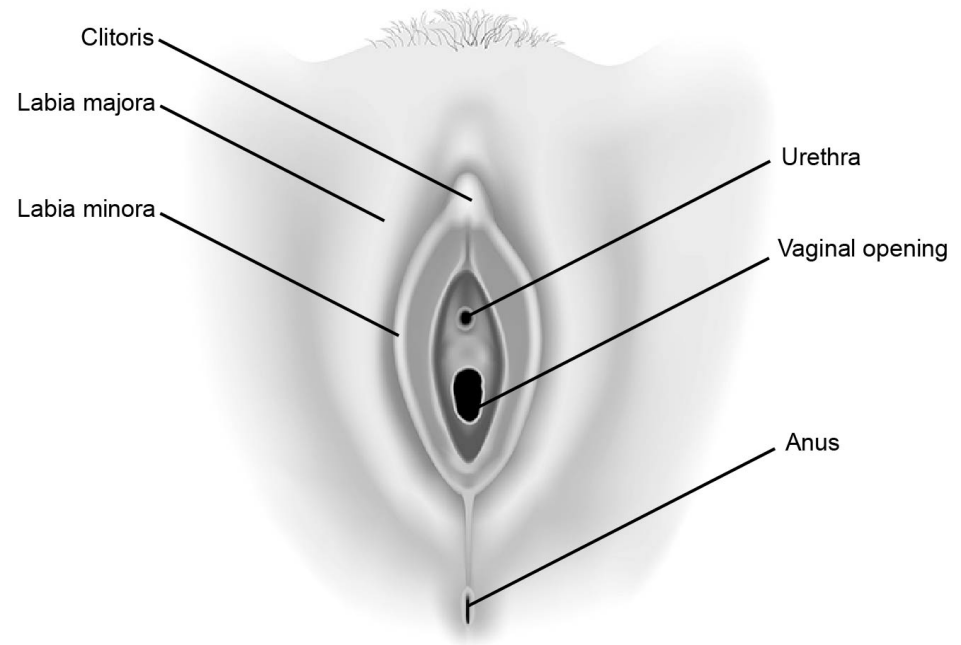
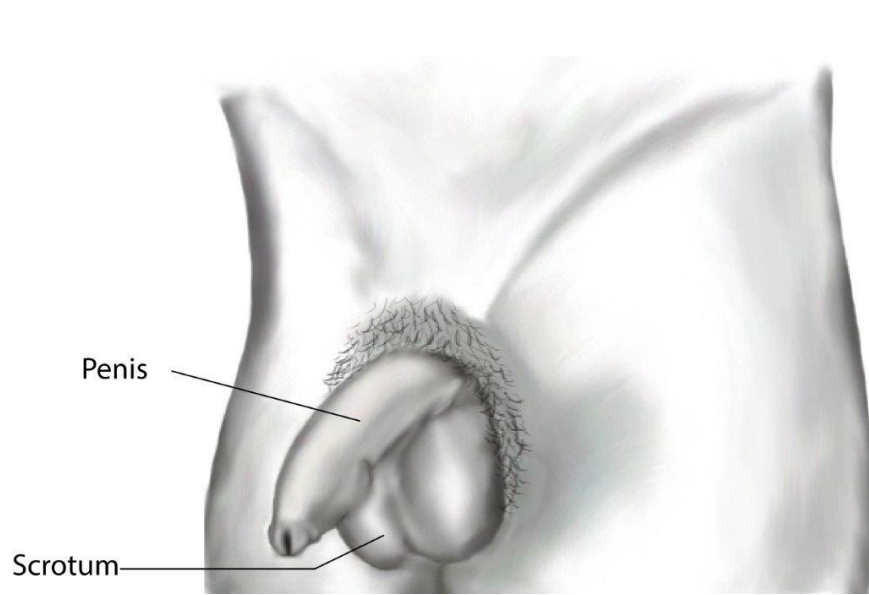
# Body Parts



# External Genitals



# External Genitals

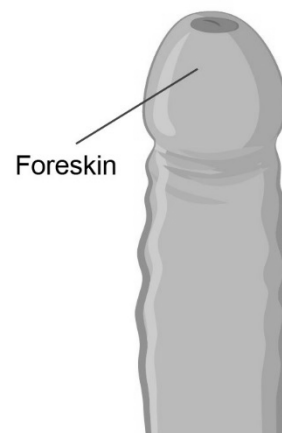


# External Genitals

Circumcised Penis



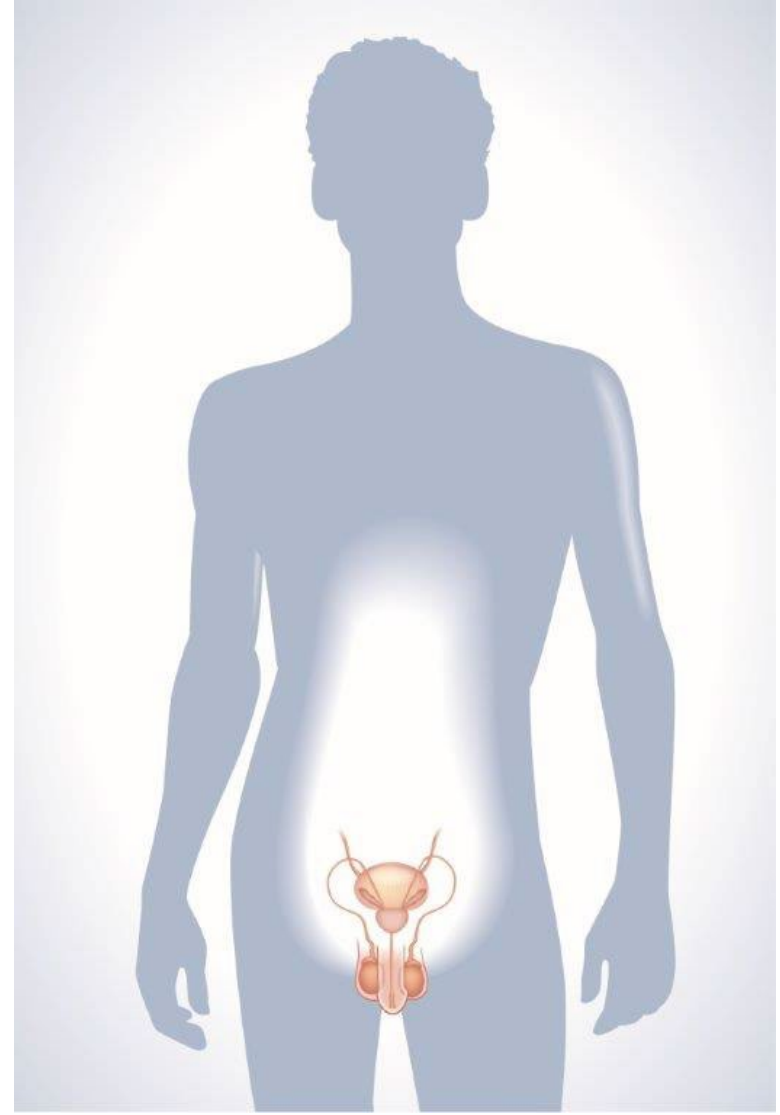
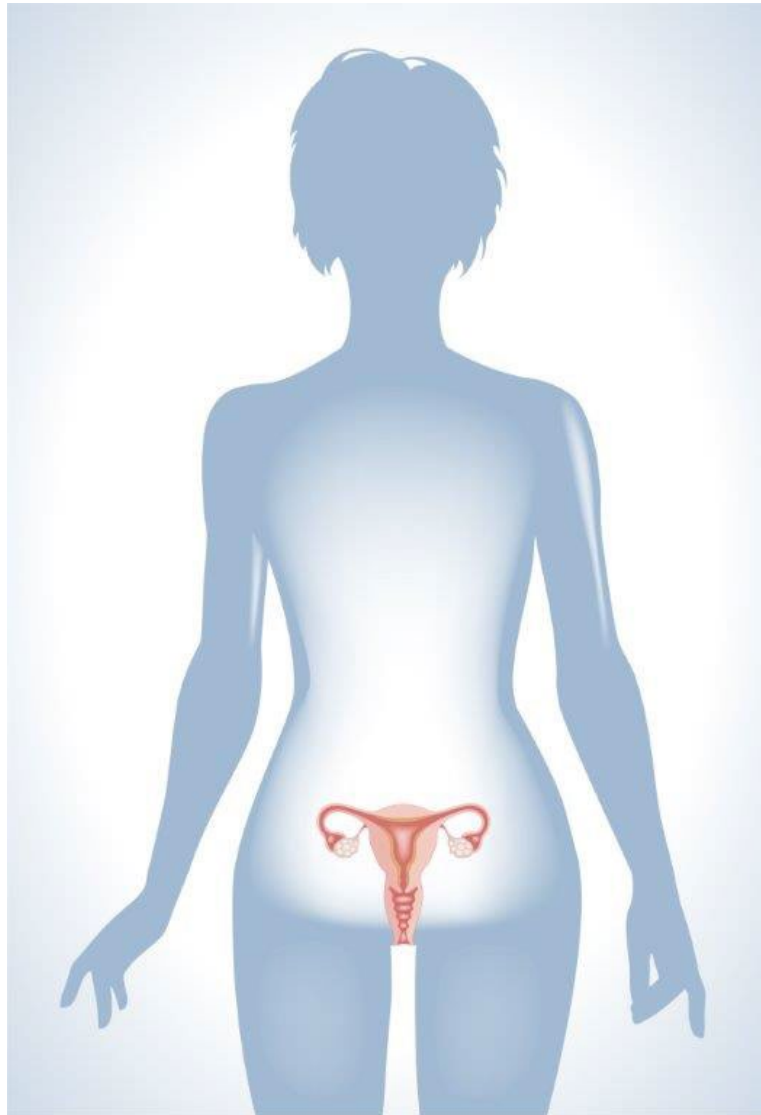
Uncircumcised Penis





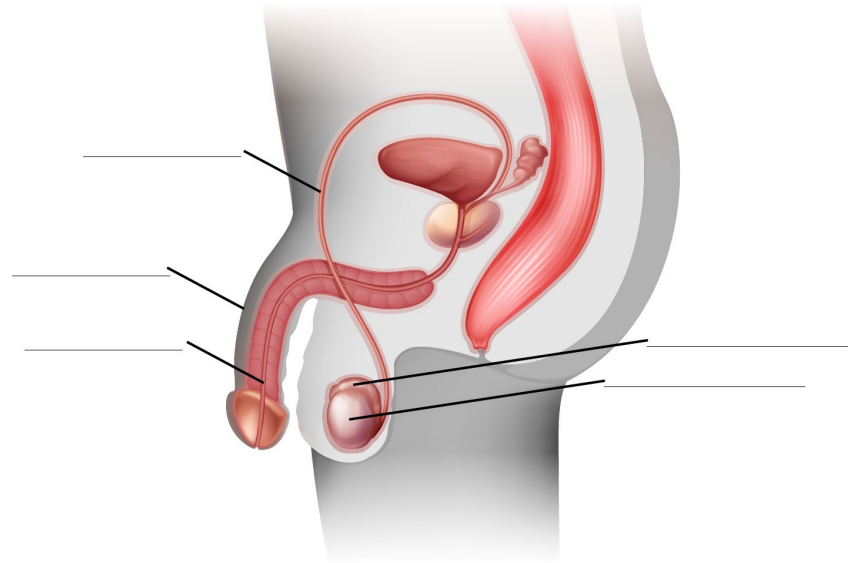
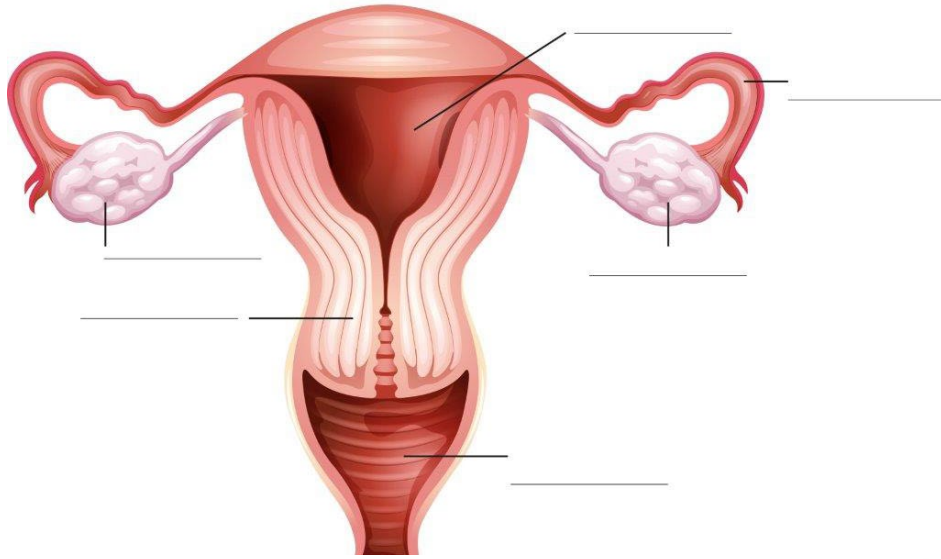
# Reproduction, Pregnancy and Birth

# Reproductive Systems

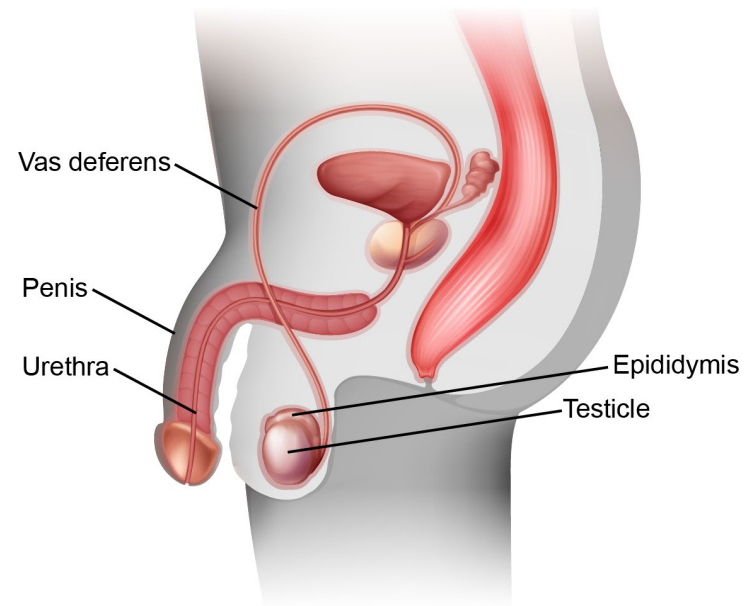
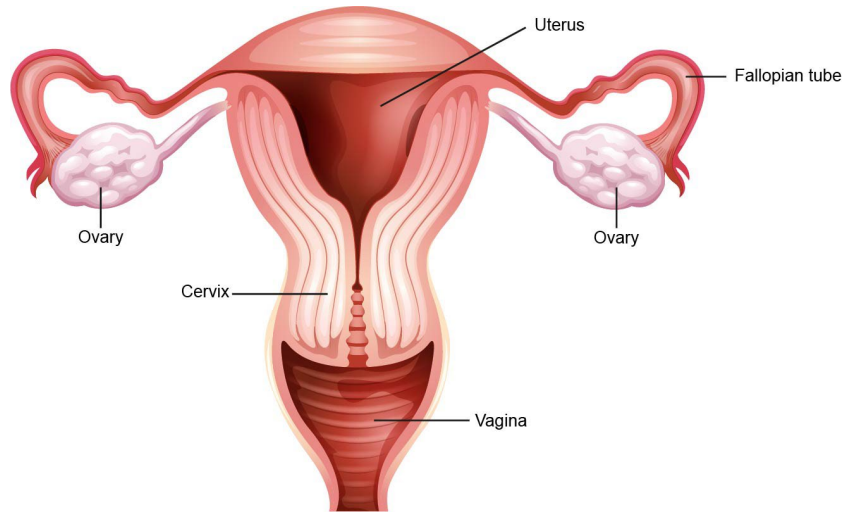




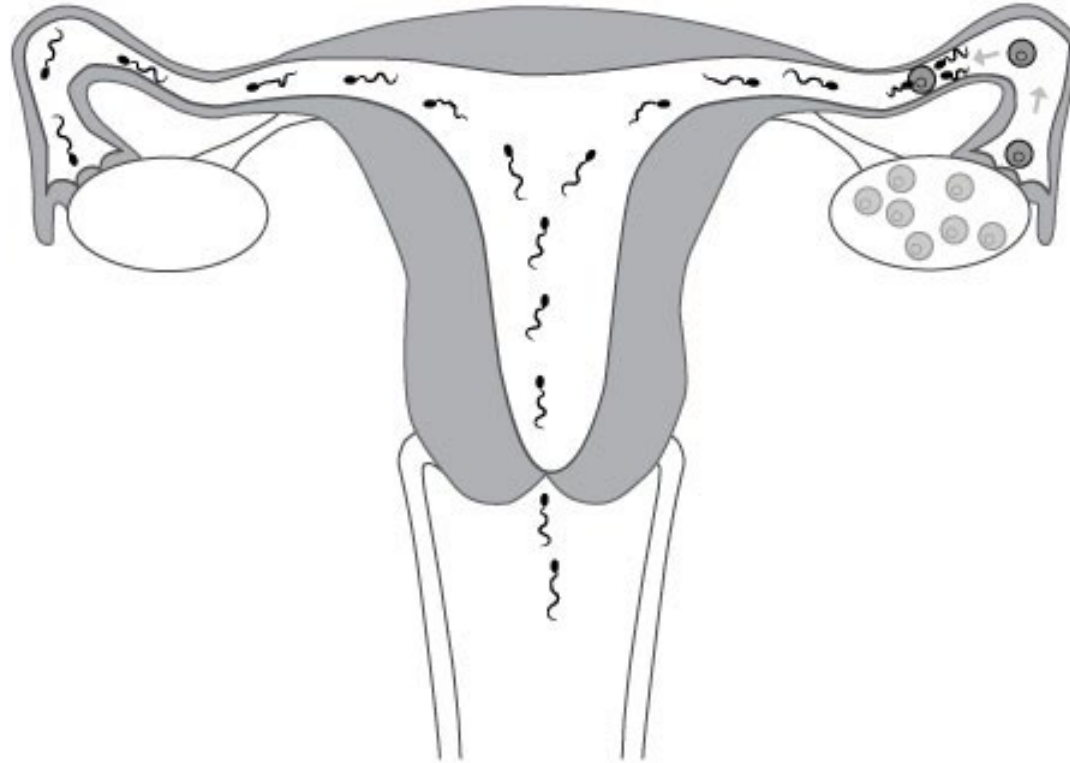
# Reproductive Systems



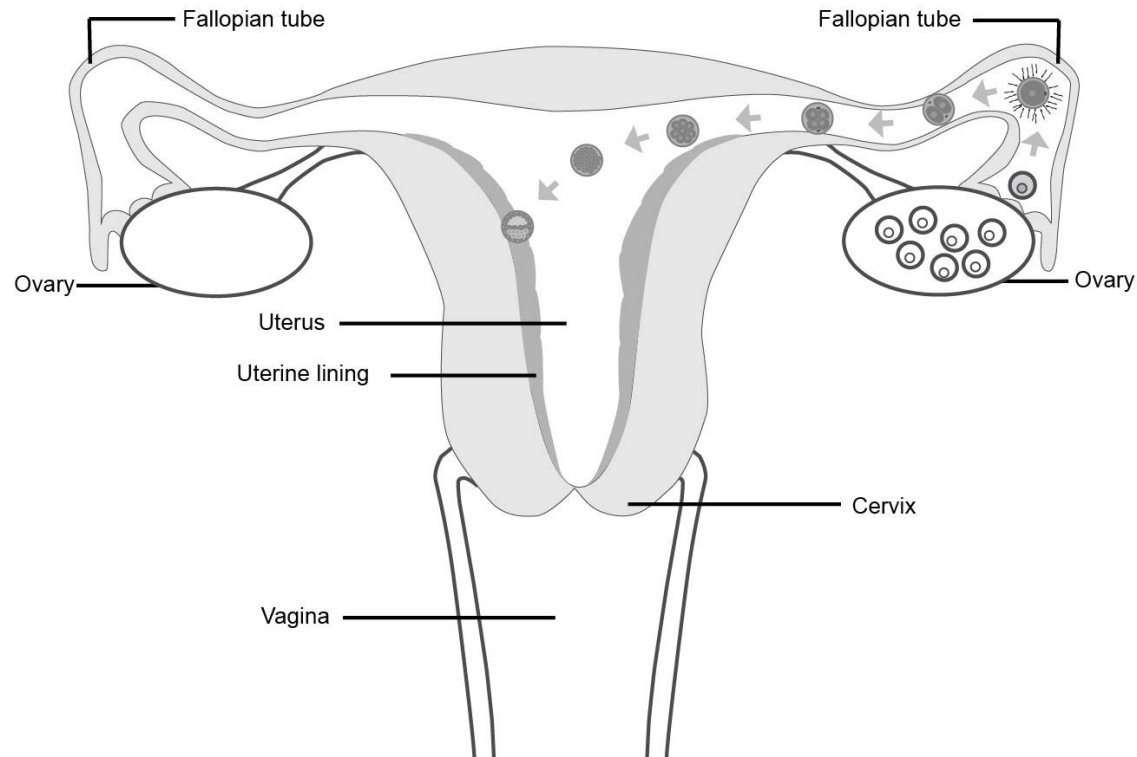
# Reproductive Systems



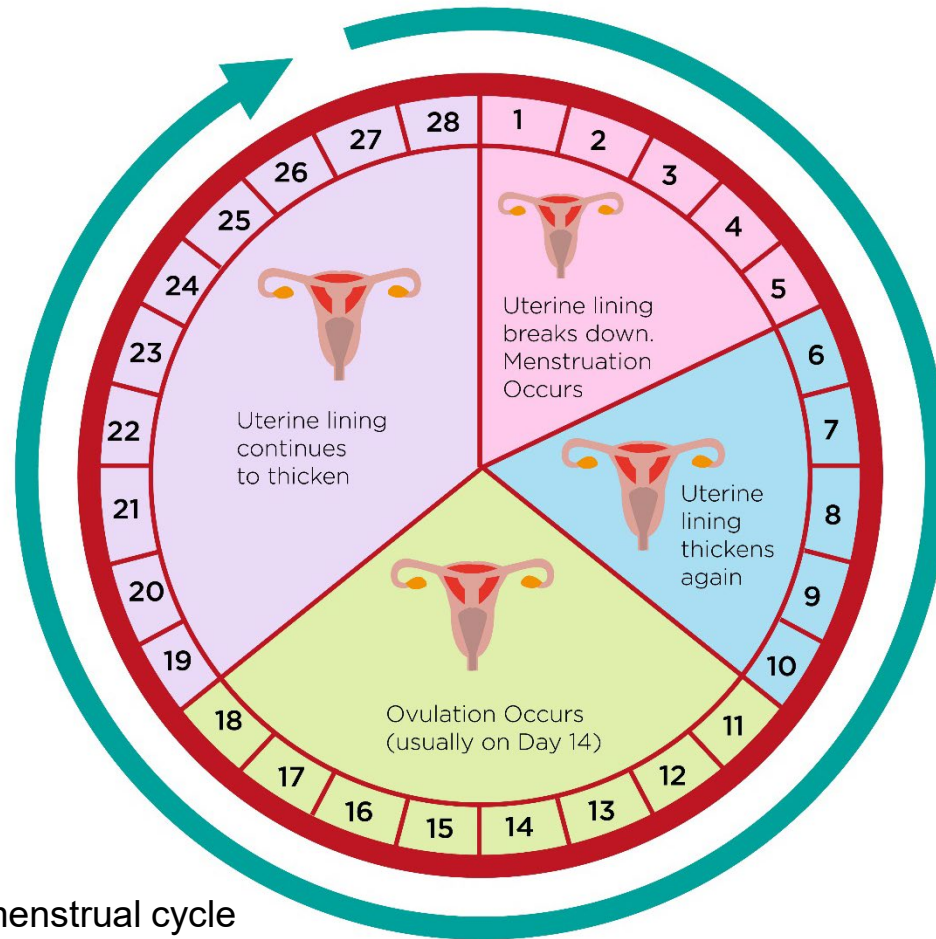
# Fertilization



# Implantation



# Menstrual Cycle



This diagram shows a menstrual cycle of 28 days, which is an average. Cycles can vary between 24-38 days long.

# Sperm Production

